

TECHNICAL MANUAL

**ORGANIZATIONAL, DIRECT SUPPORT AND
GENERAL SUPPORT MAINTENANCE
REPAIR PARTS AND SPECIAL TOOLS LIST
(INCLUDING DEPOT MAINTENANCE REPAIR PARTS
AND SPECIAL TOOLS)**

FOR

**AIR COMPRESSOR, RECIPROCATING,
GASOLINE ENGINE DRIVEN,
15 CFM, 175 PSI
NSN 4310-01-164-5544**

HEADQUARTERS, DEPARTMENT OF THE ARMY

14 APRIL 1986

TM 5-4310-376-24P
C 2

CHANGE
NO. 2

HEADQUARTERS
DEPARTMENT OF THE ARMY
WASHINGTON, D. C., 12 JUNE 1992

Organizational, Direct Support and
General Support Maintenance
Repair Parts and Special Tools List
(Including Depot Maintenance Repair Parts and Special Tools List)
for

**Air Compressor, Reciprocating,
Gasoline Engine Driven,
15 CFM, 175 PSI
NSN 4310-01-164-5544**

Current as of 1 October 1985

Approved for public release; distribution is unlimited

TM 5-4310-376-24P, dated 14 April 1986, is changed as follows:

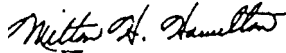
1. Remove and insert pages as indicated below. New or changed text material is indicated by a vertical bar in the margin. An illustration change is indicated by a miniature pointing hand.

Remove pages	Insert pages
i/(ii blank)	i/(ii blank)
2-1 and Figure 3	2-1 and Figure 3
4-1 and Figure 5	4-1 and Figure 5
13-1 and Figure 14	13-1 and Figure 14
14-1 and Figure 15	14-1 and Figure 15
I-1 through I-5/(I-6 blank)	I-1 through I-5/(I-6 blank)

2. Retain this sheet in front of manual for reference purposes.

By Order of the Secretary of the Army:

Official:



MILTON H. HAMILTON
*Administrative Assistant to the
Secretary of the Army*

01679

GORDON R. SULLIVAN
*General, United States Army
Chief of Staff*

DISTRIBUTION:

To be distributed in accordance with DA Form 12-25E, qty rqr block no. 2333.

CHANGE }
NO. 1 }

HEADQUARTERS
DEPARTMENT OF THE ARMY
WASHINGTON, D.C., 21 October 1987

ORGANIZATIONAL, DIRECT SUPPORT AND
GENERAL SUPPORT MAINTENANCE
REPAIR PARTS AND SPECIAL TOOLS LIST
(INCLUDING DEPOT MAINTENANCE REPAIR PARTS
AND SPECIAL TOOLS)

FOR

AIR COMPRESSOR, RECIPROCATING,
GASOLINE ENGINE DRIVEN,
15 CFM, 175 PSI
NSN 4310-01-164-5544

TM 5-4310-376-24P, 14 April 1986, is changed as follows:

1. Remove and insert pages as indicated below. The asterisk(*) to the left of the item no. Column adjacent to the line item indicates the current change. An illustration change is indicated by a miniature pointing hand.

Remove pages	Insert pages
11-1 and Fig 12	11-1 and Fig 12
12-1 and Fig 13	12-1 and Fig 13
I-1 and I-2	I-1 and I-2
I-5/I-6	I-5/I-6

2. The change includes addition of NSN to the Part Number Index.

3. Retain this sheet in front of manual for reference purposes.

By Order of the Secretary of the Army:

OFFICIAL:

R. L. DILWORTH
Brigadier General, United States Army
The Adjutant General

CARL E. VUONO
General, United States Army
Chief of Staff

DISTRIBUTION:

To be distributed in accordance with DA Form 12-25A, Unit, and Direct Support and General Support Maintenance requirements for Compressor, Reciprocating, Air, Gas Engine Driven, 15CFM, 175PSI (50-6840).

**ORGANIZATIONAL, DIRECT SUPPORT AND
GENERAL SUPPORT MAINTENANCE
REPAIR PARTS AND SPECIAL TOOLS LIST
FOR
AIR COMPRESSOR, RECIPROCATING,
GASOLINE ENGINE DRIVEN,
15 CFM, 175 PSI
NSN 4310-01-164-5544**

Current as of 1 October 1985

REPORTING OF ERRORS AND RECOMMENDING IMPROVEMENTS

You can help improve this manual. If you find any mistake or if you know of a way to improve the procedures, please let us know. Mail your letter, DA Form 2028, (Recommended Changes to Publications and Blank Forms) or DA Form 2028-2 located in the back of this manual direct to: Commander, U.S. Army Troop Support Command, ATTN: AMSTR-MMTS, 4300 Goodfellow Blvd., St. Louis, MO 63120-1798. A reply will be furnished directly to you.

Approved for public release; distribution is unlimited.

TABLE OF CONTENTS

		Page	Illus Figure
Section I.	INTRODUCTION	1	
Section II.	REPAIR PARTS LIST	1-1	
Group 01	Compressor drive	1-1	1
	02 Fuel system	2-1	2
	03 Capacity control	3-1	3
	04 Compressor assembly	4-1	4
	Air Cleaner	5-1	5
	Cylinder heads, intake and exhaust valves.	6-1	6
	05 Engine assembly	11-1	11
	Fuel filter, air cleaner assembly, lubrication system, carburetor and fuel pump	12-1	12
	Exhaust system	13-1	13
	Starter/blower housing and ignition system	14-1	14
	Governor	15-1	15
	Cylinder head, crankcase and cylinder	16-1	16
	06 Air discharge system	17-1	17
	07 Air receiver system	18-1	18
Section III.	SPECIAL TOOLS LIST (Not applicable).		
Section IV.	NATIONAL STOCK NUMBER AND REFERENCE NUMBER INDEX . I-1		

ORGANIZATIONAL, DIRECT SUPPORT, AND GENERAL SUPPORT MAINTENANCE REPAIR PARTS AND SPECIAL TOOLS LIST

Section I. INTRODUCTION

1. SCOPE. This RPSTL lists and authorizes spares and repair parts; special tools; special test, measurement, and diagnostic equipment (TMDE); and other special support equipment required for performance of organizational, direct support, and general support maintenance of the Air Compressor. It authorizes the requisitioning, issue, and disposition of spares, repair parts and special tools as indicated by the source, maintenance and recoverability (SMR) codes.

2. GENERAL. In addition to this section, Introduction, this Repair Parts and Special Tools List is divided into the following sections:

a. Section II. Repair Parts List. A list of spares and repair parts authorized by this RPSTL for use in the performance of maintenance. The list also includes parts which must be removed for replacement of the authorized parts. Parts lists are composed of functional groups in ascending alphanumeric sequence, with the parts in each group listed in ascending figure and item number sequence. Bulk materials are listed in item name sequence. Repair parts kits are listed separately in their own functional group within Section II. Repair parts for repairable special tools are also listed in this section. Items listed are shown on the associated illustration(s)/figure(s).

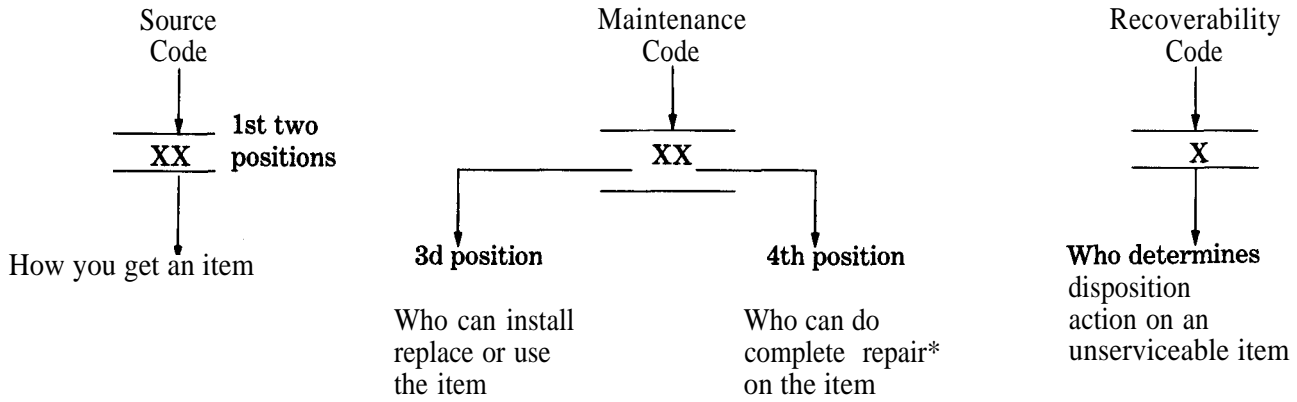
b. Section III. Special Tools List. A list of special tools, special TMDE, and other special support equipment authorized by this RPSTL (as indicated by Basis of Issue (BOI) information in DESCRIPTION AND USABLE ON CODE column) for the performance of maintenance.

c. Section IV. National Stock Number and Part Number Index. A list, in National item identification number (NIIN) sequence, of all National stock numbered items appearing in the listing, followed by a list in alphanumeric sequence of all part numbers appearing in the listings. National stock numbers and part numbers are cross-referenced to each illustration figure and item number appearance.

3. EXPLANATION OF COLUMNS (SECTIONS II AND III).

a. ITEM NO. (Column (1)). Indicates the number used to identify items called out in the illustration.

b. SMR Code (Column (2)). The Source, Maintenance, and Recoverability (SMR) code is a 5-position code containing supply/requisitioning information, maintenance category authorization criteria, and disposition instruction, as shown in the following breakout:



*Complete Repair: Maintenance capacity, capability, and authority to perform all corrective maintenance tasks of the "Repair" function in a use/user environment in order to restore serviceability to a failed item.

(1) Source Code. The source code tells you how to get an item needed for maintenance, repair, or overhaul/ of an end item/equipment. Explanations of source codes follows:

Code	Explanation
<div style="border: 1px solid black; padding: 5px;"> PA PB PC** PD PE PF PG </div>	Stocked items; use the applicable NSN to request/requisition items with these source codes. They are authorized to the category indicated by the code entered in the 3d position of the SMR code. **NOTE: Items coded PC are subject to deterioration.
<div style="border: 1px solid black; padding: 5px;"> KD KF KB </div>	Items with these codes are not to be requested/requisitioned individually. They are part of a kit which is authorized to the maintenance category indicated in the 3d position of the SMR code. The complete kit must be requisitioned and applied.

Code	Explanation
<div style="border: 1px solid black; padding: 5px;"> MO - (Made at org/AVUM Level) MF - (Made at DS/AVUM Level) MH - (Made at GS Level) ML - (Made at Specialized Repair Activity (SRA)) MD - (Made at Depot) </div>	Items with these codes are not to be requested/requisitioned individually. They must be made from bulk material which is identified by the part number in the DESCRIPTION and USABLE ON CODE (UOC) column and listed in the Bulk Material group of the repair parts list in the RPSTL. If the item is authorized to you by the 3d position code of the SMR code, but the source code indicates it is made at a higher level, order the item from the higher level of maintenance.

Code	Explanation
<div style="border: 1px solid black; padding: 5px;"> AO - (Assembled by org/AVUM Level) AF - (Assembled by DS/AVIM Level) AH - (Assembled by GS Category) AL - (Assembled by SRA) AD - (Assembled by Depot) </div>	Items with these codes are not to be requested/requisitioned individually. The parts that make up the assembled item must be requisitioned or fabricated and assembled at the level of maintenance indicated by the source code. If the 3d position code of the SMR code authorizes you to replace the item, but the source code indicates the items are assembled at a higher level, order the item from the higher level of maintenance.

Code	Explanation
XA	- DO not requisition an "XA" coded item. Order its next higher assembly. (Also, refer to the NOTE below.)
XB	- If an "XB" item is not available from salvage, order it using the FSCM and part number given.
XC	- Installation drawing, diagram, instruction sheet, field service drawing, that is identified by manufacturer's part number.
XD	- Item is not stocked. Order an "XD" coded item through normal supply channels using the FSCM and part number given, if no NSN is available.

NOTE

Cannibalization or controlled exchange, when authorized, maybe used as a source of supply for items with the above source codes, except for those source coded "XA" or those aircraft support items restricted by requirements of AR 700-42.

(2) Maintenance Code. Maintenance codes tells you the level(s) of maintenance authorized to USE and REPAIR support items. The maintenance codes are entered in the third and fourth positions of the SMR Code as follows:

(a) The maintenance code entered in the third position tells you the lowest maintenance level authorized to remove, replace, and use an item. The maintenance code entered in the third position will indicate authorization to one of the following levels of maintenance.

Code	Application/Explanation
C	- Crew or operator maintenance done within organizational or aviation unit maintenance.
O	- Organizational or aviation unit category can remove, replace, and use the item.
F	- Direct support or aviation intermediate level can remove, replace, and use the item.
H	- General support level can remove, replace, and use the item.
L	- Specialized repair activity can remove, replace, and use the item.
D	- Depot level can remove, replace, and use the item.

(b) The maintenance code entered in the fourth position tells whether or not the item is to be repaired and identities the lowest maintenance level with the capability to do complete repair (i.e., perform all authorized repair functions.) NOTE: Some limited repair may be done on the item at a lower level of maintenance, if authorized by the Maintenance Allocation Chart (MAC) and SMR codes. This position will contain one of the following maintenance codes.

Code	Application/Explanation
O	- Organizational or (aviation unit) is the lowest level that can do complete repair of the item.
F	- Direct support or aviation intermediate is the lowest level that can do complete repair of the item.

Code	Application/Explanation
H	- General support is the lowest level that can do complete repair of the item.
L	- Specialized repair activity is the lowest level that can do complete repair of the item.
D	- Depot is the lowest level that can do complete repair of the item.
Z	- Nonreparable. No repair is authorized.
B	- No repair is authorized. (No parts or special tools are authorized for the maintenance of a "B" coded item). However, the item maybe reconditioned by adjusting, lubricating, etc., at the user level.

(3) Recoverability Code. Recoverability codes are assigned to items to indicate the disposition action on unserviceable items. The recoverability code is entered in the fth position of the SMR Code as follows

Recoverability Codes	Application/Explanation
Z	- Nonreparable item. When unserviceable, condemn and dispose of the item at the level of maintenance shown in 3d position of SMR Code.
O	- Repairable item. When uneconomically repairable, condemn and dispose of the item at organizational or aviation unit level.
F	- Repairable item. When uneconomically repairable, condemn and dispose of the item at the direct support or aviation intermediate level.
H	- Repairable item. When uneconomically repairable, condemn and dispose of the item at the general support level.
D	- Repairable item. When beyond lower level repair capability, return to depot. Condemnation and disposal of item not authorized below depot level.
L	- Repairable item. Condemnation and disposal not authorized below specialized repair activity (SRA).
A	- Item requires special handling or condemnation procedures because of specific reasons (e.g., precious metal content, high dollar value, critical material, or hazardous material). Refer to appropriate manuals/directives for specific instructions.

c. FSCM (Column 3). The Federal Supply Code for Manufacturer (FSCM) is a 5-digit numeric code is used to identify the manufacturer, distributor, or Government agency, etc., that supplies the item.

d. PART NUMBER (Column 4). Indicates the primary number used by the manufacturer, (individual, company, firm, corporation, or Government activity), which controls the design and characteristics of the item by means of its engineering drawings, specifications standards, and inspection requirements to identify an item or range of items.

NOTE

When you use a NSN to requisition an item, the item you receive may have a different part number from the part ordered.

e. DESCRIPTION AND USABLE ON CODE (UOC) (Column (5)). This column includes the following information:

- (1) The Federal item name and, when required, a minimum description to identify the item.
- (2) The physical security classification of the item is indicated by the parenthetical entry, e.g., Phy Sec C1 - Confidential, Phy Sec C1 (S) - Secret, Phy Sec C1 (T) - Top Secret.
- (3) Items that are included in kits and sets are listed below the name of the kit or set.
- (4) Spare/repair parts that make up an assembled item are listed immediately following the assembled item line entry.
- (5) Part numbers for bulk materials are referenced in this column in the line item entry for the item to be manufactured/fabricated.
- (6) When the item is not used with all serial numbers of the same model, the effective serial numbers are shown on the last line(s) of the description (before UOC).
- (7) The usable on code, when applicable (see paragraph 5, Special Information).
- (8) In the Special Tools List section, the basis of issue (BOI) appears as the last line(s) in the entry for each special tool, special TMDE, and other special support equipment. When density of equipments supported exceed density spread indicated in the basis of issue, the total authorization is increased proportionately.
- (9) The statement "END OF FIGURE" appears just below the last item description in Column 5 for a given figure in both Section II and Section III.

f. QTY (Column (6)). The QTY (quantity per figure column) indicates the quantity of the item used in the breakout shown on the illustration figure, which is prepared for a functional group, or an assembly. A "V" appearing in this column in lieu of a quantity indicates that the quantity is variable and may vary from application to application.

4. EXPLANATION OF COLUMNS (SECTION IV).

a. NATIONAL STOCK NUMBER (NSN) INDEX.

- (1) **STOCK NUMBER column.** This column lists the NSN by National item identification number (NIIN) sequence. The NIIN consists of the last nine digits of the NSN, i.e. (5305-01-574-1467).

NSN

NIIN

When using this column to locate an item, ignore the first 4 digits of the NSN. However, the complete NSN should be used when ordering items by stock number.

- (2) **FIG. column.** This column lists the number of the figure where the item is identified/located. The figures are in numerical order in Section II and Section III.
- (3) **ITEM column.** The item number identifies the item associated with the figure listed in the adjacent FIG. column. This item is also identified by the NSN listed on the same line.

b. PART NUMBER INDEX. Part numbers in this index are listed by part number in ascending alphanumeric sequence (i.e., vertical arrangement of letter and number combination which places the first letter or digit of each group in order A through Z, followed by the numbers 0 through 9 and each following letter or digit in like order).

- (1) **FSCM column.** The Federal Supply Code for Manufacturer (FSCM) is a 5-digit numeric code used to identify the manufacturer, distributor, or Government agency, etc., that supplies the item.
- (2) **PART NUMBER column.** Indicates the primary number used by the manufacturer (individual, firm, corporation, or Government activity), which controls the design and characteristics of the item by means of its engineering drawings, specifications standards, and inspection requirements to identify an item or range of items.
- (3) **STOCK NUMBER column.** This column lists the NSN for the associated part number and manufacturer identified in the PART NUMBER and FSCM columns to the left.
- (4) **FIG. column.** This column lists the number of the figure where the item is identified/located in Sections II and III.
- (5) **ITEM column.** The item number is that number assigned to the item as it appears in the figure referenced in adjacent figure number column.

5. SPECIAL INFORMATION. Use the following subparagraphs as applicable:

a. USABLE ON CODE. The usable on code appears in the lower left corner of the Description column heading. Usable on codes are shown as "UOC" in the Description Column (justified left) on the first line applicable item description/nomenclature. Uncoded items are applicable to all models.

b. ASSOCIATED PUBLICATIONS. The publication listed below pertains to the Direct Support Section and its components.

Publication	Short Title
TM 5-4130-376-14	Operator's and Maintenance Manual for 15 CFM Compressor

6. HOW TO LOCATE REPAIR PARTS.

a. When National Stock Number or Part Number is NOT Known.

- (1) **First.** Using the table of contents, determine the assembly group or subassembly group to which the item belongs. This is necessary since figures are prepared for assembly groups and subassembly groups, and listings are divided into the same groups.
- (2) **Second.** Find the figure covering the assembly group or subassembly group to which the item belongs.
- (3) **Third.** Identify the item on the figure and note the item number.
- (4) **Fourth.** Refer to the Repair Parts List for the figure to find the part number for the item number noted on the figure.
- (5) **Fifth.** Refer to the Part Number Index to find the NSN, if assigned.

b. When National Stock Number or Part Number is Known:

(1) First. Using the Index of National Stock Numbers and Part Numbers, find the pertinent National Stock Number or Part Number. The NSN index is in National Item Identification Number (NIIN) sequence (see 4a(1)). The part numbers in the Part Number index are listed in ascending alphanumeric sequence (see paragraph 4b). Both indexes cross-reference you to the illustration figure and item number of the item you are looking for.

(2) Second. After finding the figure and item number, verify that the item is the one you are looking for, then locate the item number in the repair parts list for the figure.

7. ABBREVIATIONS. Abbreviations used in this manual are listed in MIL-STD-12.

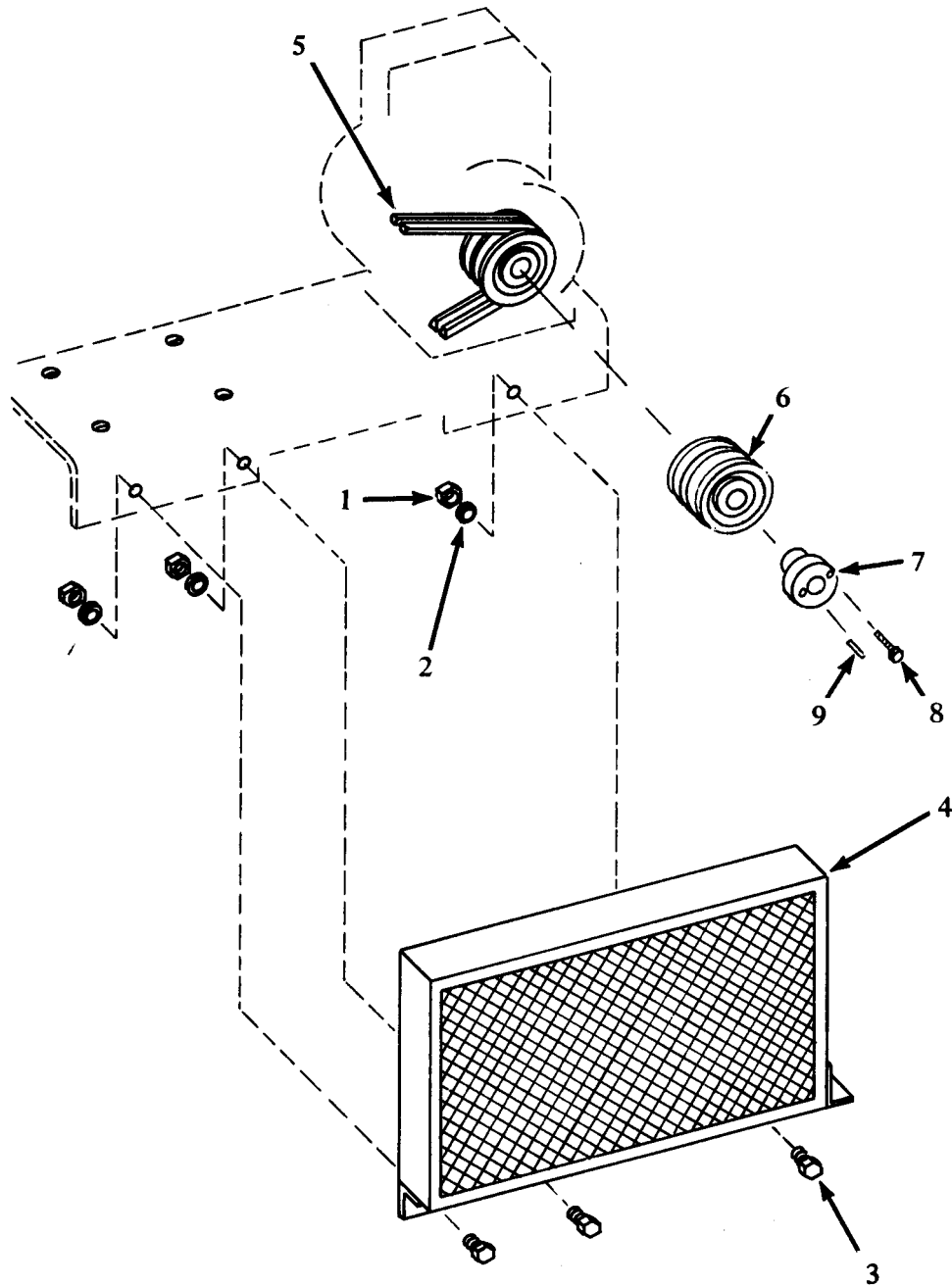


Figure 1. Compressor Drive

SECTION II					
(1)	(2)	(3)	(4)	(5)	(6)
ITEM NO	SMR CODE	FSCM	PART NUMBER	DESCRIPTION AND USABLE ON CODE (UOC)	QTY
TM5-4310-376-24P					
GROUP 01 COMPRESSOR DRIVE					
FIGURE 1. COMPRESSOR DRIVE					
1	PAOZZ	96906	MS35649-2312	NUT,PLAIN,HEXAGON	3
2	PAOZZ	96906	MS35338-45	WASHER,LOCK	7
3	PAOZZ	96906	MS90725-32	BOLT,MACHINE	7
4	PBOOO	19272	20-6334	GUARD ASSEMBLY,BELT	1
5	PAOZZ	24161	A62	BELT,V	2
6	PAOZZ	71176	2BK62H	PULLEY,GROOVE	1
7	PAOZZ	71176	H-1	BUSHING,TAPERED WITH CAP SCREWS	1
8	PAOZZ	96906	MS90725-6	.SCREW,CAP,HEXAGON HEAD	2
9	PAOZZ	96906	MS20066-258	KEY,MACHINE 1/4 X 2IN	1
END OF FIGURE					

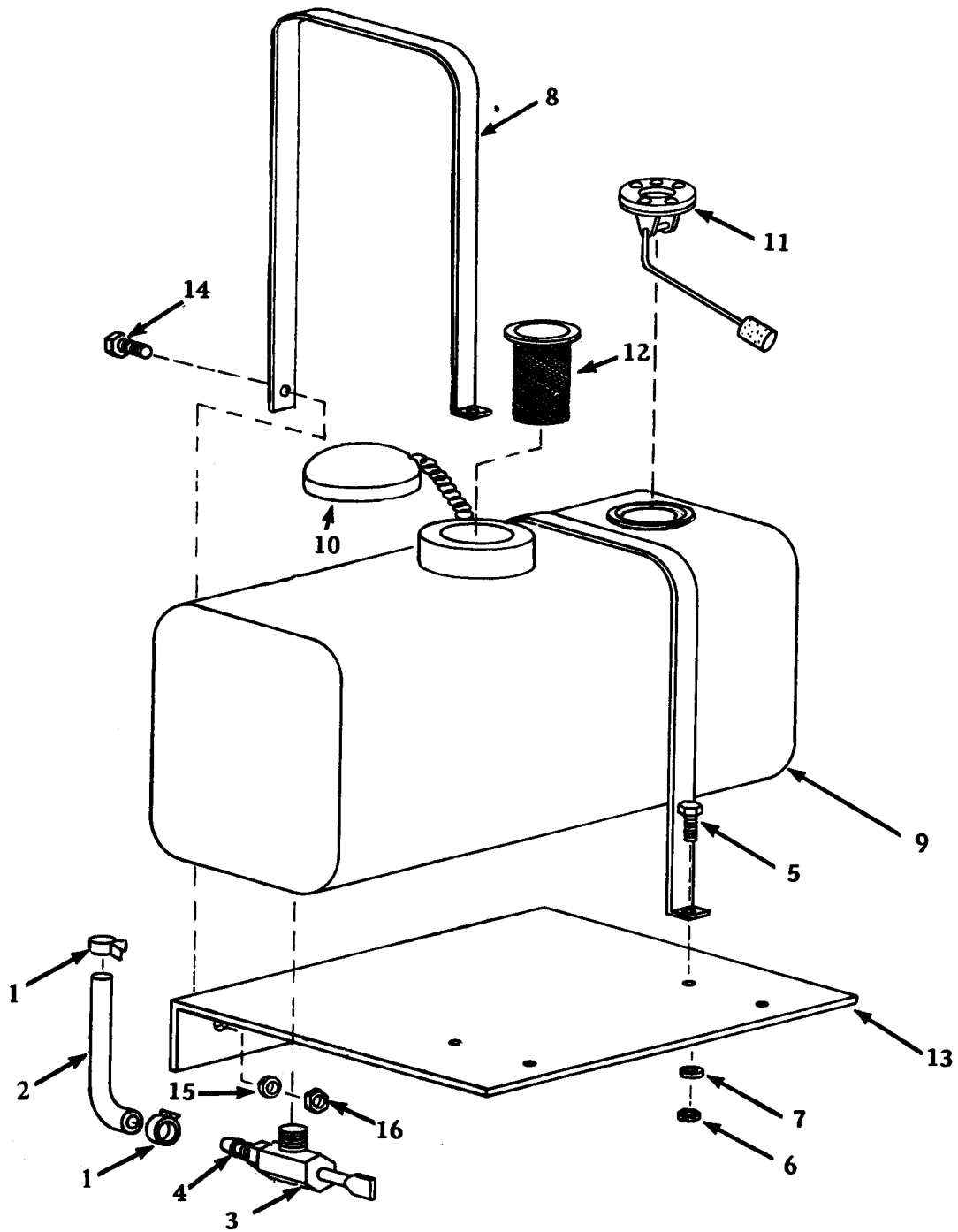


Figure 2. Fuel System

SECTION II					
(1)	(2)	(3)	(4)	(5)	(6)
ITEM NO	SMR CODE	FSCM	PART NUMBER	DESCRIPTION AND USABLE ON CODE (UOC)	QTY
TM5-4310-376-24P					
GROUP 02 FUEL SYSTEM					
FIGURE 2. FUEL SYSTEM					
1	PAOZZ	08645	93053	CLAMP,HOSE	2
2	MFOOO	19272	20-6354	LINE,FUEL 1/2 IN OD X 1/4 IN ID X 10 IN LG	1
3	PAOZZ	08645	390303	VALVE,ANGLE	1
4	PAOZZ	19272	230318	CONNECTOR,FUEL PIPE	1
5	PAOZZ	96906	MS90725-14	SCREW,CAP,HEXAGON H 1/4-20 X 2 IN STEEL	2
6	PAOZZ	96906	MS35649-2252	NUT,PLAIN,HEXAGON 1/4-20 STEEL	4
7	PAOZZ	96906	MS35338-44	WASHER,LOCK 1/4 IN STEEL	4
8	PAOZZ	19272	11-6342	STRAP,FUEL TANK	2
9	PAOZZ	19297	11-6320	TANK,FUEL,ENGINE	1
10	XAOZZ	19272	11-6325	.CAP,FILLER OPENING	1
11	PAOZZ	19272	11-6326	.INDICATOR,LIQUID QUANTITY	1
12	PAOZZ	19272	11-6341	.STRAINER ELEMENT,SEDIMENT	1
13	XBOZZ	19272	20-6355	BRACKET	1
14	PAOZZ	96906	MS18154-60	SCREW,CAP,HEXAGON HEAD 3/8-16 X 1 IN STEEL	2
15	PAOZZ	96906	MS35338-46	WASHER,LOCK 3/8 IN	2
16	PAOZZ	96906	MS35649-2382	NUT,PLAIN, HEXAGON 3/8-16 CADMIUM PLATED	2
END OF FIGURE					

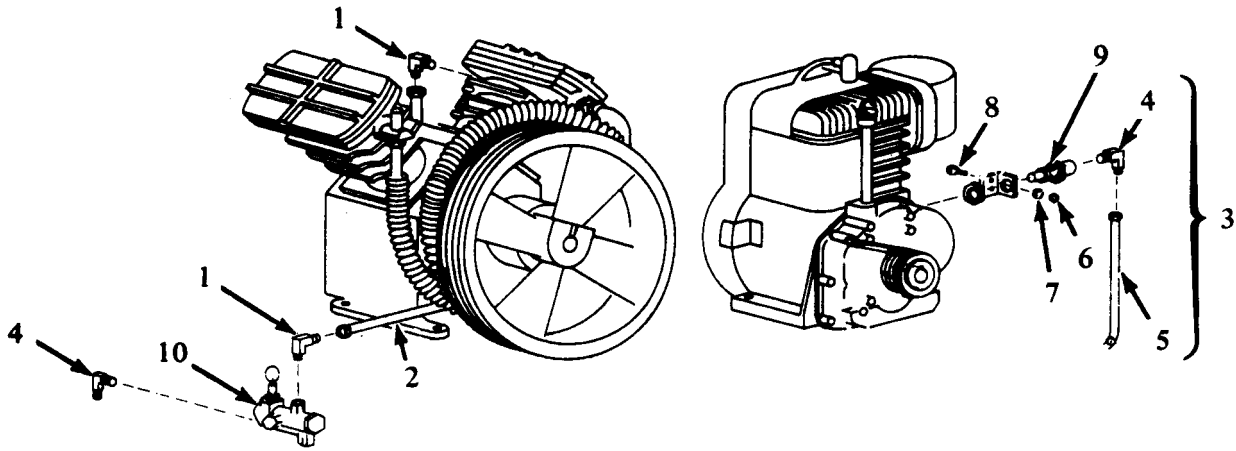


Figure 3. Capacity Control

SECTION II				TM5-4310-376-24P		
(1)	(2)	(3)	(4)	(5)	(6)	
ITEM NO	SMR CODE	FSCM	PART NUMBER	DESCRIPTION AND USABLE ON CODE (UOC)	QTY	
GROUP 03 CAPACITY CONTROL						
FIGURE 3. CAPACITY CONTROL						
1	PAOZZ	79470	69X12	ELBOW,PIPE TO TUBE 1/2 NPT X 3/4 TUBE	2	
2	PAOZZ	19272	50-6844	TUBE ASSEMBLY,METAL 3/4 IN COPPER	1	
3	XBOZZ	19272	50-6851	TUBE ASSY,CONTROL	1	
4	PAOZZ	93061	269C2-2	.ELBOW,PIPE TO TUBE 1/8 IN PIPE X 1/8 IN TUBE	2	
5	MFOOO	19272	7-21-11-21-48	BRASS	1	
6	PAOZZ	96906	MS35649-262	.TUBE	2	
7	PAOZZ	96906	MS35338-41	NUT,PLAIN,HEXAGON	2	
8	PAOZZ	96906	MS35206-230	WASHER,LOCK	2	
9	PAOOO	19272	11-6306	SCREW,MACHINE 6-32 X 1/2 IN PHILIPS HD CADMIUM	2	
10	PAOZO	58818	LGM-20TM	PLATED	1	
				CYLINDER,AIR	1	
				VALVE,UNLOADING AND SAFETY	1	
END OF FIGURE						

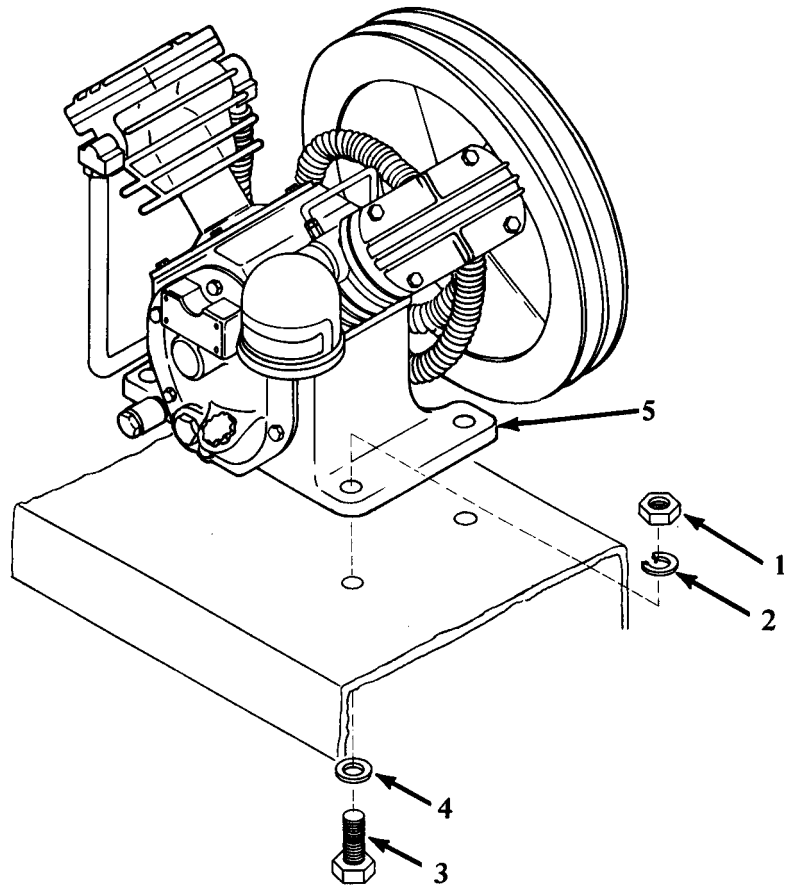


Figure 4. Compressor Assembly

SECTION II					
(1)	(2)	(3)	(4)	(5)	(6)
ITEM NO	SMR CODE	FSCM	PART NUMBER	DESCRIPTION AND USABLE ON CODE (UOC)	QTY
				TM5-4310-376-24P	
GROUP 04 COMPRESSOR ASSEMBLY					
FIGURE 4. COMPRESSOR ASSEMBLY					
1	PAOZZ	96906	MS5-1967-14	NUT,PLAIN,HEXAGON 1-2-13 STEEL	4
2	PAOZZ	96906	MS35338-48	WASHER,LOCK COMP MTG 1/2 IN STEEL	4
3	PAOZZ	96906	MS90725-113	SCREW,CAP,HEXAGON HEAD COMP MTG	4
4	PAOZZ	96906	MS27183-17	WASHER,FLAT COMP MTG 1/2 IN STEEL	4
5	PBOHH	88663	242	COMPRESSOR,RECIPROCATING	1
END OF FIGURE					

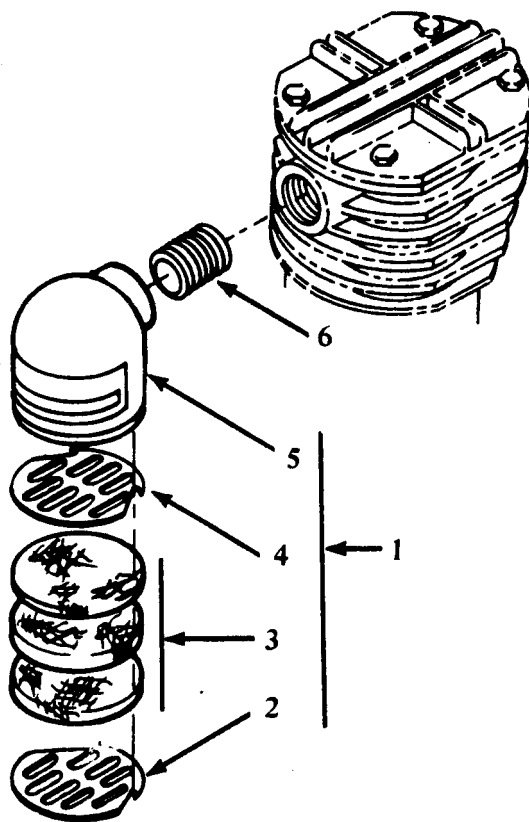


Figure 5. Air Cleaner

SECTION II				TM5-4310-376-24P	
(1)	(2)	(3)	(4)	(5)	(6)
ITEM NO	SMR CODE	FSCM	PART NUMBER	DESCRIPTION AND USABLE ON CODE (UOC)	QTY
GROUP 04 COMPRESSOR ASSEMBLY					
FIGURE 5. AIR CLEANER					
1	PAOOO	88663	30292734	.FILTER, INLET, ASSEMBLY	1
2	PAOZZ	88663	30283121	..DISC, INLET FILTER	2
3	KFOZZ	88663	30283139	..ELEMENT, INLET FLTR PART OF KIT P/N 320011173	3
4	PAOZZ	88663	30283121	..DISC, INLET FILTER	11
5	XAOZZ	88663	32001869	..BODY, INLET FILTER	1
6	PAOZZ	96906	MS51953-121B	.NIPPLE, PIPE 1 IN NPT X 1 1/2 IN LG, BLACK IRON	1
END OF FIGURE					

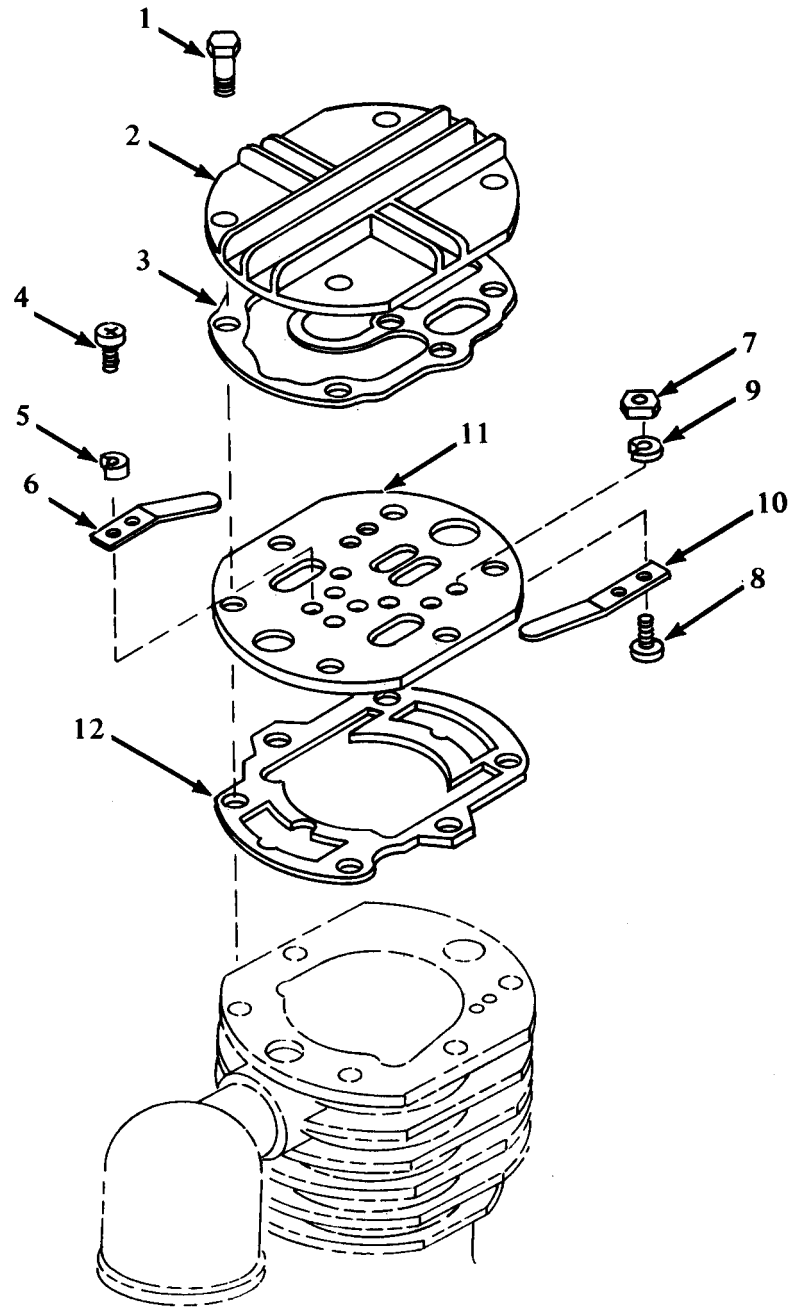


Figure 6. Cylinder Heads, Intake and Exhaust Valves (Sheet 1 of 2)

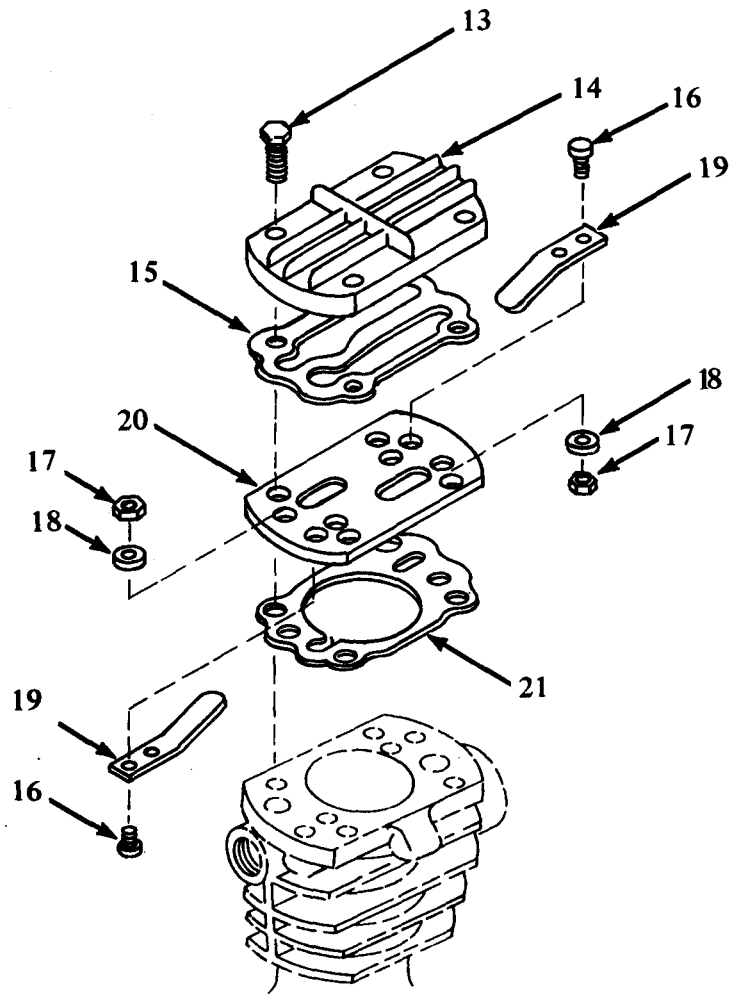


Figure 6. Cylinder Heads, Intake and Exhaust Valves (Sheet 2 of 2)

SECTION II (1)	SMR (2)	FSCM (3)	TM5-4310-376-24P PART NUMBER (4)	DESCRIPTION AND USABLE ON CODE (UOC) GROUP 04. COMPRESSOR ASSEMBLY FIGURE 6. CYLINDER HEADS, INTAKE AND EXHAUST VALVES	(6) QTY
1	PAOZZ	96906	MS90728-114	.SCREW,CAP,HEXAGON HEAD 1/2-13 X 1 3/4 IN,GR 5	4
2	XDOZZ	88663	37127362	.HEAD,AIR	1
3	KFOZZ	88663	30279038	.GASKET,AIR HEAD PART OF KIT P/N 320011173	1
4	PAOZZ	88663	87A2C500P	.SCREW,MACHINE	4
5	PAOZZ	96906	MS35338-44	.WASHER,LOCK 1/4 IN CARBON STEEL	12
6	KFOZZ	88663	30221170	.VALVE,FINGER PART OF KIT P/N 320011173	6
7	PAOZZ	96906	MS35649-2252	.NUT,PLAIN,HEXAGON 1/4-20 STEEL	8
8	PAOZZ	51436	87A2C144G	.SCREW,MACHINE FILLISTER HEAD 1/4-20 X 1/2 IN CARBON STEEL ZINC PLATED	8
9	PAOZZ	96906	MS35338-44	.WASHER,LOCK 1/4 IN STEEL	REF
10	KFOZZ	88663	30221170	.VALVE,FINGER PART OF KIT P/N 320011173	REF
11	PAOZZ	88663	37127289	.SPACER,AIR HEAD	1
12	PAOZZ	88663	3028C515	.GASKET	1
13	PAOZZ	96906	MS90725-64	.SCREW,CAP,HEXAGON HEAD 3/8 X 1/2 IN.GR 5,STEEL	4
14	XBOZZ	88663	37127354	.HEAD,AIR	1
15	KFOZZ	88663	30280507	.GASKET,AIR HEAD PART OF KIT P/N 320011173	1
16	PAOZZ	51436	87A2C144G	.SCREW,MACHINE 1/4-20 X 1/2 IN CARBON STEEL,FILLISTER HEAD	
17	PAOZZ	96906	MS355649-2252	.NUT,PLAIN,HEXAGON 1/4-20 STEEL	
18	PAOZZ	96906	MS35338-44	.WASHER,LOCK 1/4 IN CARBON STEEL CADIUM PLATED	
19	KFOZZ	88663	30221170	.VALVE,FINGER PART OF KIT P/N 320011173	1
20	PAOZZ	88663	37127248	.SPACER	1
21	PAOZZ	88663	30280374	.GASKET	1

END OF FIGURE

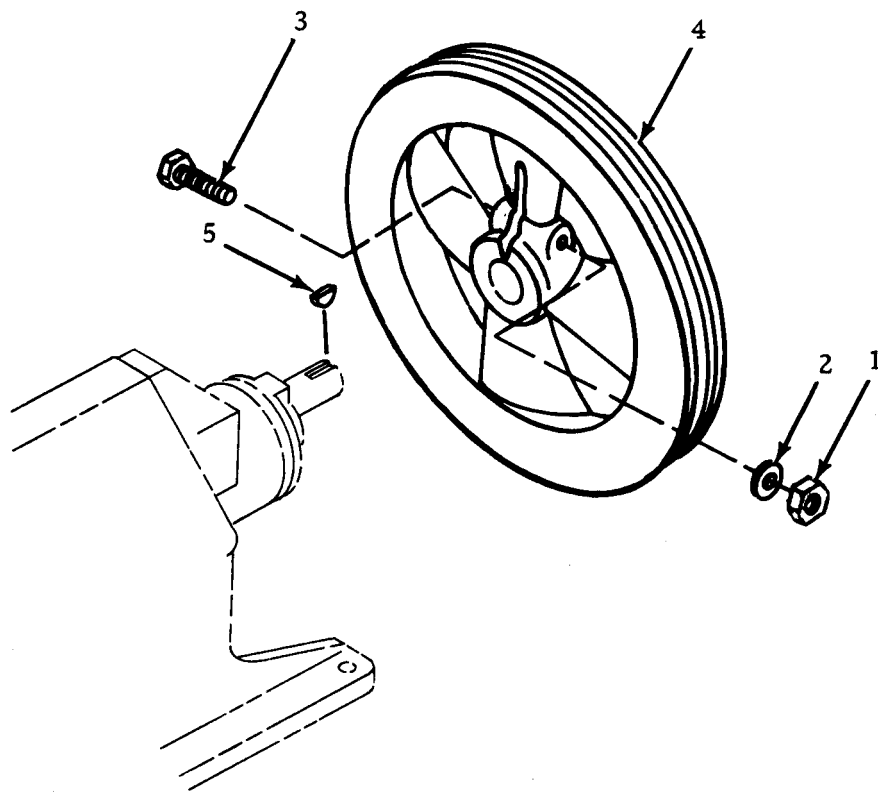


Figure 7. Flywheel

SECTION II				TM5-4310-376-24P		
(1)	(2)	(3)	(4)	(5)	(6)	
ITEM	SMR		PART			
NO	CODE	FSCM	NUMBER	DESCRIPTION AND USABLE ON CODE (UOC)		QTY
GROUP 04 COMPRESSOR ASSEMBLY						
FIGURE 7.FLYWHEEL						
1	PAFZZ	96906	MS51967-15	.NUT,PLAIN,HEXAGON 1/2-14,CARBON STEEL		1
2	PAFZZ	96906	MS35338-48	.WASHER,LOCK 1/2 IN CADIUM PLATED		1
3	PAFZZ	96906	MS90725-123	.SCREW,CAP,HEX HD 1/2-13 X 4 IN		1
4	XBFZZ	88663	30212922	.WHEEL,BELT		1
5	PAFZZ	51436	23A90709	.KEY,WOODRUFF 7/32 X 1 1/8 IN,STEEL		1
END OF FIGURE						

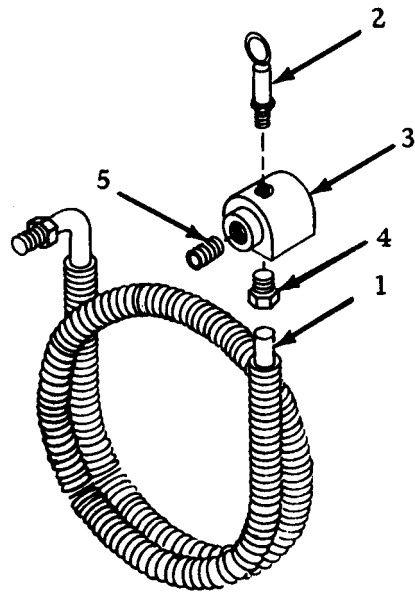


Figure 8. Intercooler

SECTION II				TM5-4310-376-24P		
(1)	(2)	(3)	(4)	(5)	(6)	
ITEM	SMR		PART			
NO	CODE	FSCM	NUMBER	DESCRIPTION AND USABLE ON CODE (UOC)		QTY
				GROUP 04 COMPRESSOR ASSEMBLY		
				FIGURE 8. INTERCOOLER		
1	PAFZZ	88663	30335392	.TUBE ASSEMBLY,METAL INTER COOLER,FLARED WITH FITTINGS		1
2	PAFZZ	34494	1/4 948-60	.VALVE,SAFETY RELIEF		1
3	PBFZZ	19272	83-1049	.MANIFOLD,INTERCOOLER		1
4	PAFZZ	88663	95083275	.CONNECTOR,MALE		1
5	PAFZZ	88663	95056073	.BUSHING,REDUCER		2
				END OF FIGURE		

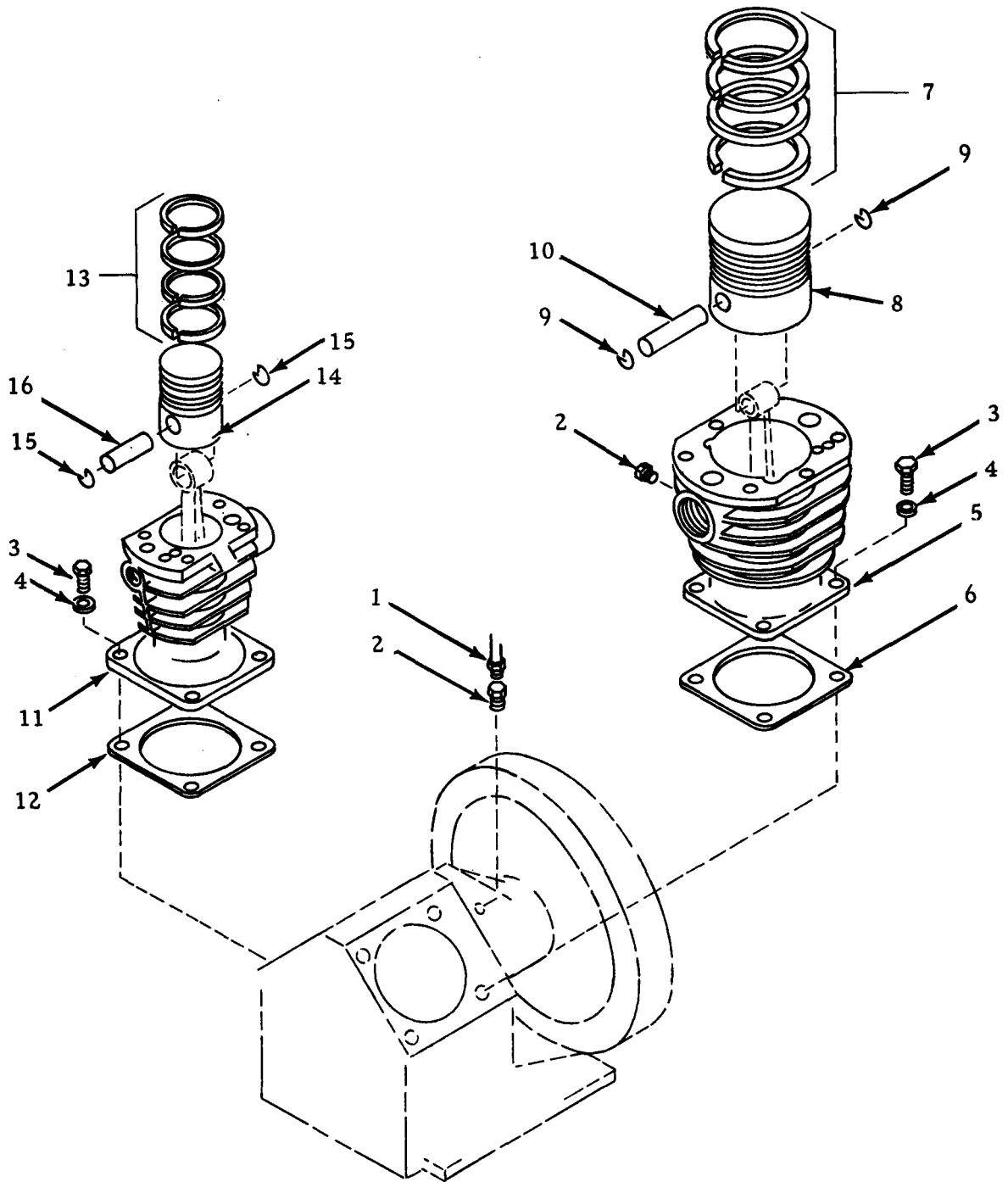


Figure 9. Pistons, Breather Tube and Cylinders

SECTION II (1)	(2)	(3)	TM5-4310-376-24P (4)	(5)	(6)
ITEM NO	SMR CODE	FSCM	PART NUMBER	DESCRIPTION AND USABLE ON CODE (UOC)	QTY
GROUP 04 COMPRESSOR ASSEMBLY					
FIGURE 9. PISTONS, BREATHER TUBE AND CYLINDERS					
1	PAFZZ	88663	37008042	.TUBE ASSEMBLY, METAL	1
2	PAFZZ	88663	71A10B7	.CONNECTOR, MALE BRASS	2
3	PAFZZ	96906	MS90725-109	.SCREW, CAP, HEXAGON HEAD 1/2-13 X 1 IN, STEEL	8
4	PAFZZ	10001	363344PC2	.WASHER, FLAT	8
5	XBFZZ	88663	37128535	.CYLINDER, LOW PRESSURE, 4 IN.	1
6	PAFZZ	88663	30289870	.GASKET, FLANGE	1
7	PBFZZ	88663	W114364T37D	.RING SET, PISTON	1
8	XBFZZ	88663	37128527	.PISTON LOW PRESSURE	1
9	PAFZZ	88663	W11630	.RING, LOCK	4
10	PBFZZ	88663	W11866	.PIN, PISTON, LOW PRESSURE	1
11	XDFZZ	88663	37128634	.CYLINDER	1
12	PAFZZ	88663	30289870	.GASKET, FLANGE	1
13	PBFZZ	88663	W114364T17	.RING SET, PISTON	1
14	PBFZZ	88663	37128626	.PISTON, COMPRESSOR, HIGH PRESSURE	1
15	PAFZZ	88663	30298020	.RING, LOCK	1
16	PBFZZ	88663	30287783	.PIN, PISTON, HIGH PRESSURE	1
END OF FIGURE					

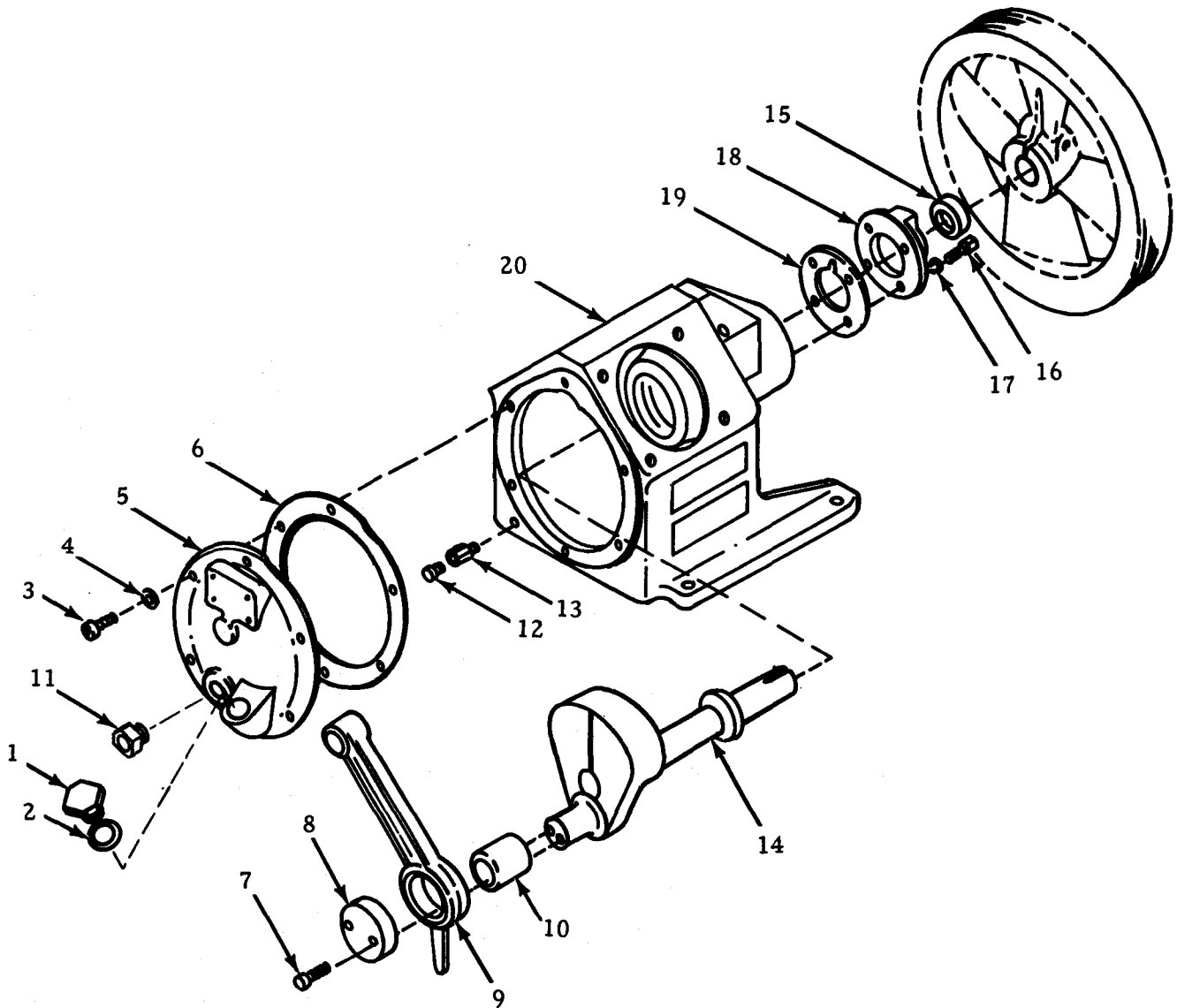


Figure 10. Crankcase, Connecting Rod, Oil Seals, Bushing and Crankcase

SECTION II (1)	SMR (2)	FSCM (3)	TM5-4310-376-24P (4) PART NUMBER	(5) DESCRIPTION AND USABLE ON CODE (UOC)	(6) QTY
GROUP 04 COMPRESSOR ASSEMBLY					
FIGURE 10. CRANKCASE, CONNECTING ROD, OIL SEALS, AND BUSHING					
1	PAFZZ	88663	371227065	.CAP,FILLER OPENING,5/16-18 X 3/4 IN,STEEL	1
2	PAFZZ	96906	MS29513-212	.PACKING,PREFORMED	1
3	PAFZZ	96906	MS90725-32	.BOLT,MACHINE	10
4	PAFZZ	51436	X1016T33	.WASHER,FLAT	10
5	XBFZZ	88663	37127768	.COVER,FRONT END	1
6	PAFZZ	88663	R40621	.GASKET,FRAME END COVER	1
7	PAFZZ	96906	MS16995-80	.SCREW,CAP,SOCKET,HEX HD	2
8	XBFZZ	88663	30210298	.CAP,CRANKPIN	1
9	PBFZZ	88663	R33936	.ROD,CONNECTING	2
10	PAFZZ	88663	W75327	.BUSHING,CRANKPIN	1
11	PAOZZ	88663	37163334	.PLUG,PIPE 1/2 IN NPT	1
12	PAOZZ	33968	W20684	.CAP.PIPE OIL DRAIN, 1/2 IN MALL.IRON	1
13	PAOZZ	96906	MS51953-80	.NIPPLE,PIPE 1/2 X 3 IN,ZINC COATED	1
14	PBFZZ	88663	32024168	.CRANSHAFT ASSEMBLY	1
15	PAFZZ	51436	W99622T3	.SEAL	1
16	PAFZZ	96906	MS90725-32	.BOLT,MACHINE 5/16-18 X 3/4 IN STEEL CADMIUM PLATED	1
17	PAFZZ	88663	30345219	.WASHER,FLAT	1
18	XBFZZ	88663	37127677	.SHAFT END COVER	1
19	PAFZZ	88663	W6925P2	.GASKET,SFT END COVER	1
20	XBFZZ	88663	32012932	.FRAME	1
	PAOZZ	88663	320011173	.KIT,ENERGY SAVER	1
				ELEMENT,INLET FLTR (003) 5- 3	
				GASKET,AIR HEAD (001) 6- 3	
				GASKET,AIR HEAD (001) 6- 15	
END OF FIGURE					

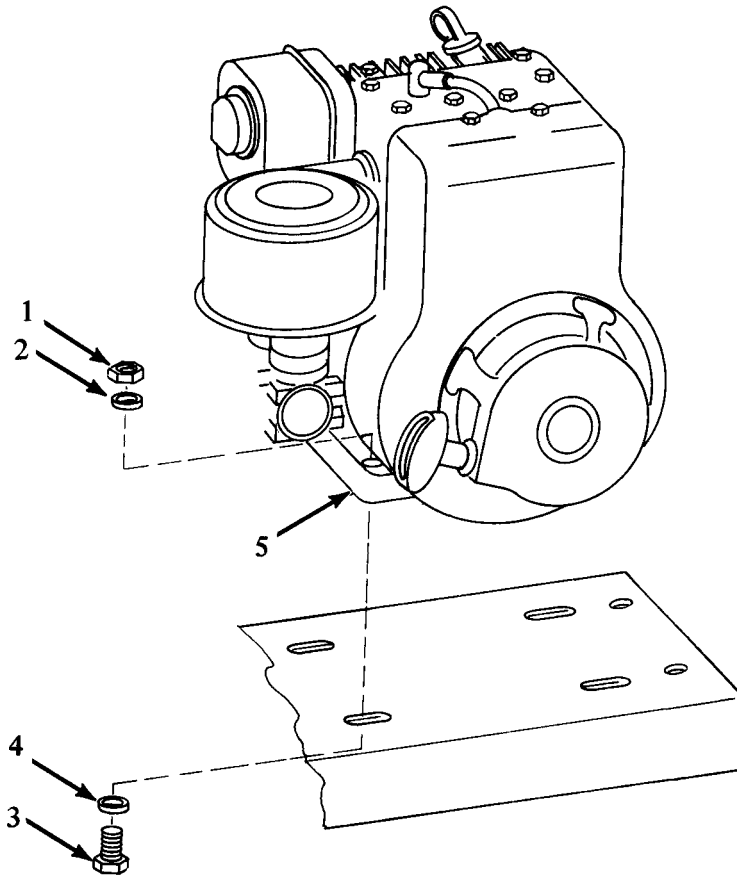


Figure 11. Engine Assembly

SECTION II (1)	ITEM (2)	(3)	TM5-4310-376-24P (4)	C01 (5)	(6)
NO	SMR CODE	FSCM	PART NUMBER	DESCRIPTION AND USABLE ON CODE (UOC)	QTY
GROUP 05 ENGINE ASSEMBLY					
FIGURE 11. ENGINE ASSEMBLY					
1	PAOZZ	96906	MS35649-2312	NUT, PLAIN, HEAXGON, ENG MTG, 5/16-18, STEEL, CADIUM PLATED	4
2	PAOZZ	96906	MS35338-45	WASHER, LOCK, 5/16, CADIUM, PLATED	4
3	PAOZZ	96906	MS90725-39	BOLT, MACHINE 5/16-18 X 1 3/4 IN, CADIUM PLATED	4
4	PAOZZ	96906	MS27183-11	WASHER, FLAT, 5/16, STEEL, CADIUM PLATED	4
* 5	PBOFH	08645	221432-2174-01	ENGINE, GASOLINE	1
END OF FIGURE					

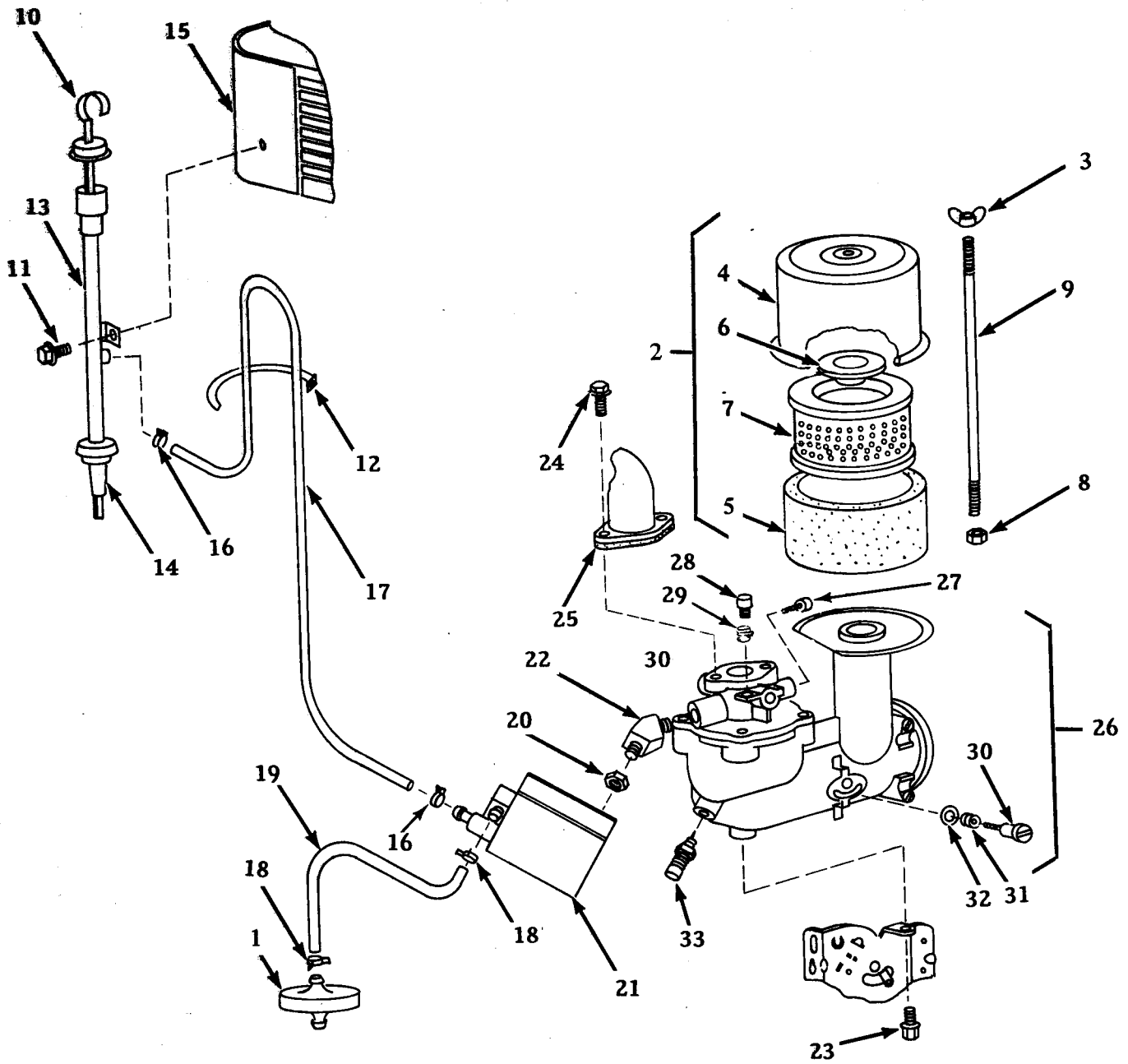


Figure 12. Fuel Filter, Air Cleaner Assembly, Lubrication System, Carburetor and Fuel Pump

SECTION II (1) ITEM NO	(2) SMR CODE	(3) FSCM	TM5-4310-376-24P (4) PART NUMBER	C01 (5) DESCRIPTION AND USABLE ON CODE (UOC)	(6) QTY
GROUP 05 ENGINE ASSEMBLY					
FIGURE 12. FUEL FILTER,AIR CLEANER ASSEMBLY,LUBRICATION SYSTEM, CARBURETOR AND FUEL PUMP					
1	PAOZZ	08645	394358	FILTER,FLUID	1
2	PAOOO	08645	391063	.AIR CLEANER,INTAKE	1
3	PAOZZ	96906	MS35425-39	.NUT,PLAIN,WING,1/4-20,STEEL	2
4	XBOZZ	08645	222271	..COVER,AIR CLEANER	1
5	PAOZZ	08645	270782	..FILTER ELEMENT,INTAKE	1
6	XBOZZ	08645	222272	..CUP,AIR CLEANER	1
7	PAOZZ	08645	390930	..FILTER ELEMENT,INTAKE	1
8	PAOZZ	96906	MS51968-2	.NUT,PLAIN,HEXAGON,1/4-28,STEEL	1
9	PAOZZ	08645	231007	.STUD,AIR CLEANER,STEEL ROD,THREADED,1/4-20 X 1 3/4 IN	1
10	PAOZZ	08645	392295	.CAP,FILLER OPENING	1
11	PAOZZ	08645	93394	.SCREW,ASSEMBLED WASHER, 3/16-24,STEEL	1
12	PAOZZ	96906	MS3367-5-9	.STRAP,TIEDOWN,ELECT,FUEL LINE MTG	1
13	PAOZZ	08645	392655	.TUBE,OIL FILTER	1
14	PAOZZ	08645	68838	.SEAL	1
15	XBOZZ	08645	222744	.SHIELD,CYLINDER	1
16	PAOZZ	08645	93053	.CLAMP,HOSE	2
17	PAOZZ	19272	7-248	.HOSE,NONMETALLIC	1
18	PAOZZ	19272	11-6321	.CLAMP	2
19	PAOZZ	19272	7-249	.HOSE,RUBBER, 1/2 IN OD X 1/4 IN ID X 12 IN LG	1
20	PAOZZ	08645	23001	.NUT,PLAIN,HEXAGON	1
21	XDOZZ	08645	390765	.PUMP ASSEMBLY	1
* 22	PAOZZ	96906	MS14307-1	.CONNECTOR,ELBOW	1
23	PAOZZ	08645	92666	.SCREW,CAP,HEXAGON HEAD,1/4-20 X 11/32 STEEL	1
24	PAOZZ	08645	93415	.SCREW 1/4-20 STEEL	2
25	KFOZZ	08645	270267	.GASKET,CARB MTG PART OF KIT P/N 391834	1
26	PAOZZ	08645	392033	.CARBURETOR,FLOAT USED WITH FUEL PUMP	1
27	PAOZZ	08645	292681	..NEEDLE VALVE, IDLE ADJUSTMENT	1
28	PAOZZ	08645	91920	..SCREW,MACHINE,FILISTER HD THROTTLE,ADJ,8-32 X 5/8 IN	1
29	PAOZZ	84830	LC-042D-3MW	..SPRING,HELICAL,COMPRESSON	1
30	PAOZZ	08645	23123	..SCREW,SHOULDER	1
31	PAOZZ	08645	26155	..SPRING,HELICAL,COMPRESSION,CHOKE LVR	1
32	PAOZZ	80063	SCB69389-4	..WASHER,FLAT	1
33	PAOZZ	08645	99525	..VALVE ASSEMBLY,NEEDLE ASSEMBLY	1

END OF FIGURE

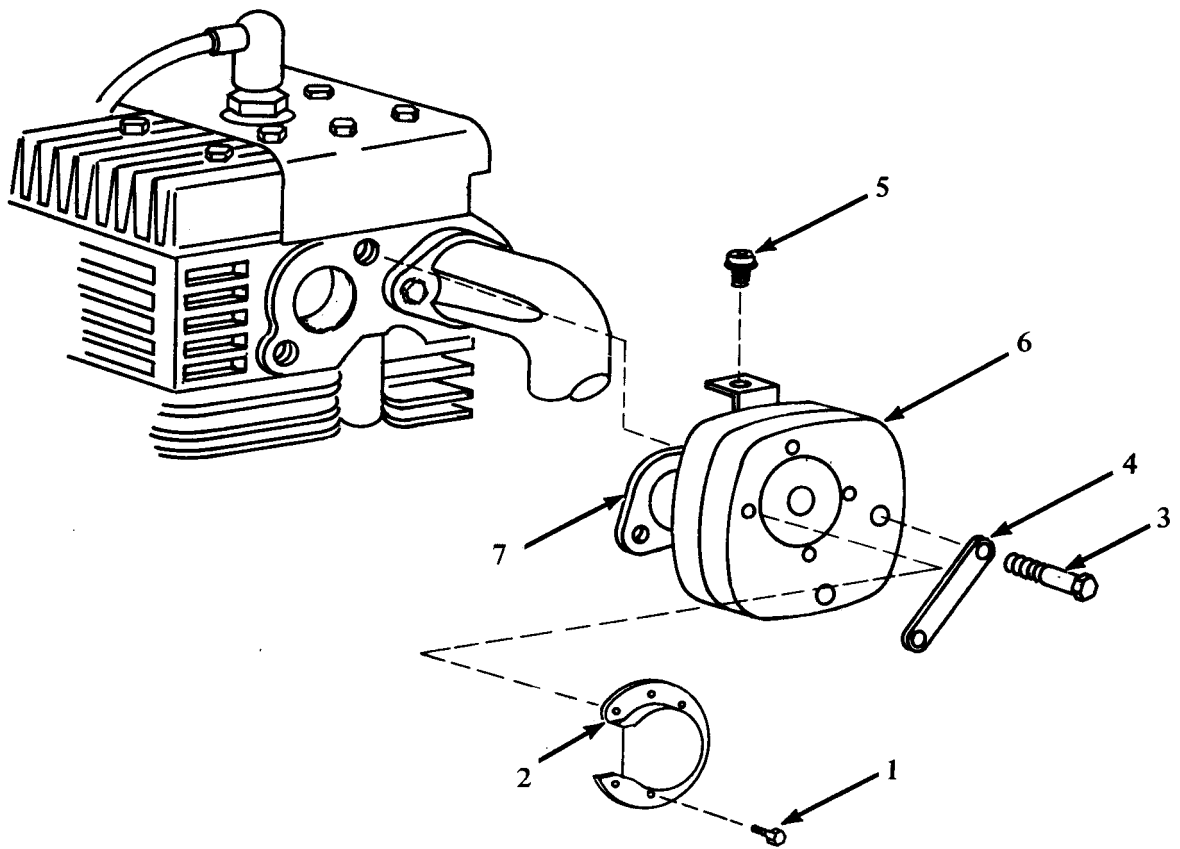


Figure 13. Exhaust System

SECTION II				TM5-4310-376-24P		
(1)	(2)	(3)	(4)	(5)	(6)	
ITEM	SMR		PART			
NO	CODE	FSCM	NUMBER	DESCRIPTION AND USABLE ON CODE (UOC)		QTY
GROUP 05 ENGINE ASSEMBLY						
FIGURE 13. EXHAUST SYSTEM						
1	PAOZZ	08645	93705	. .SCREW, ASSEMBLED WASHER, 5/32-32 X 3/8 IN, STEEL		4
2	PAOZZ	08645	393761	. DEFLECTOR, MUFFLER		1
3	PAOZZ	08645	93927	. SCREW, CAP, HEXAGON HEAD, MUFFLER MTG		2
4	PAOZZ	08645	223016	. LOCKING PLATE, NUT, ADJUSTMENT		1
5	PAOZZ	08645	93559	. SCREW, ASSEMBLED WASHER, 1/4-20 X 11/32 STEEL		1
6	PAOZZ	08645	394170	. MUFFLER, EXHAUST		1
7	PAOZZ	08645	270917	. GASKET		1
END OF FIGURE						

Note: 30 & 31 are used with the Magnetron Ignition (P/N 395492).

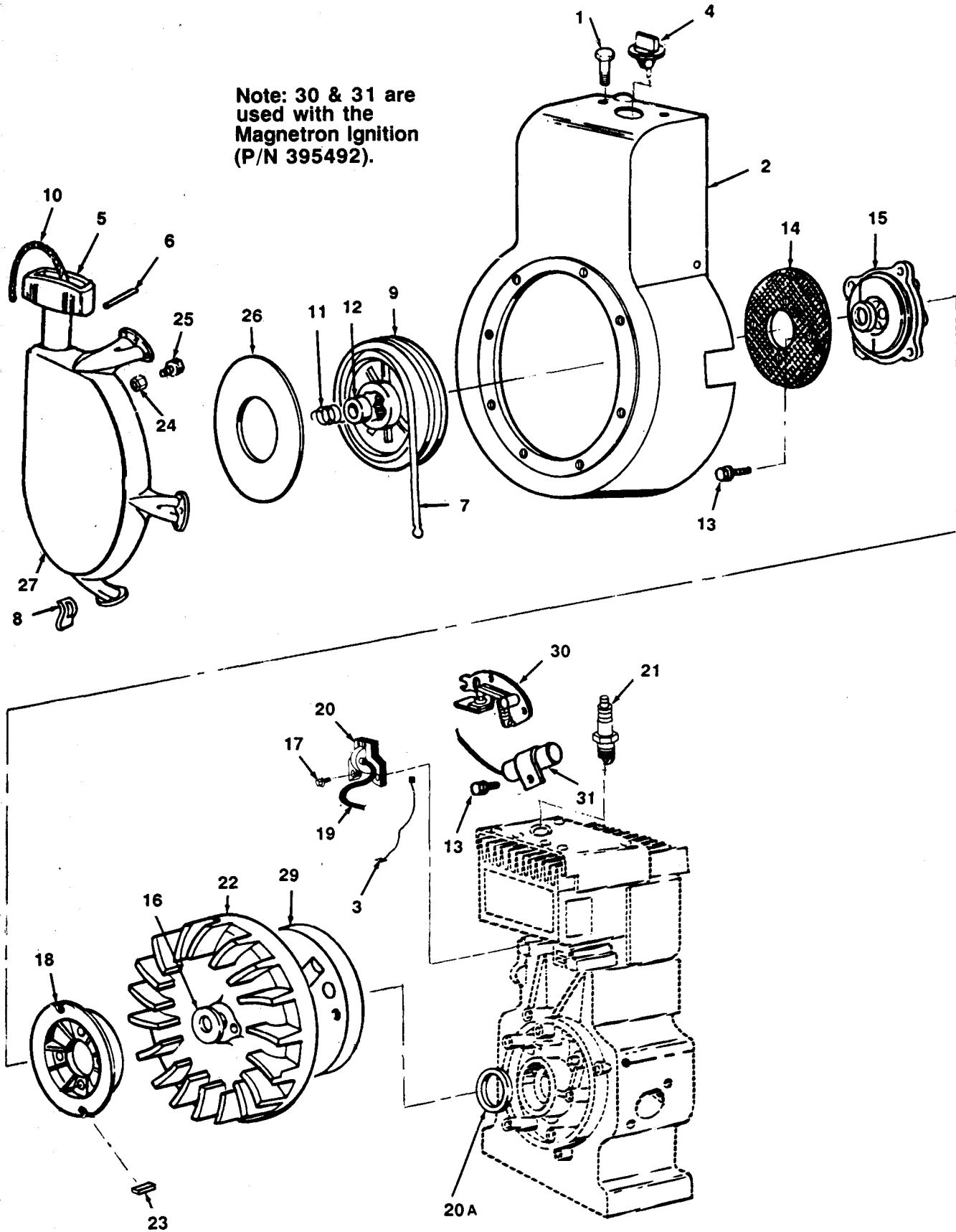


Figure 14. Starter/Blower Housing and Ignition System.

SECTION II (1) ITEM NO	(2) SMR CODE	(3) FSCM	TM5-4310-376-24P (4) PART NUMBER	(5) DESCRIPTION AND USABLE ON CODE (UOC)	(6) QTY
GROUP 05 ENGINE ASSEMBLY					
FIGURE 14. STARTER/BLOWER HOUSING AND IGNITION SYSTEM					
1	PAOZZ	08645	93158	SCREW,CAP,HEXAGON HEAD,1/4-20 X 11/32 STEEL	4
2	XBOFF	08645	398595	.HOUSING,BLOWER	1
3	PAOZZ	08645	398874	WIRE,GROUND	1
4	PAOZZ	08645	396691	SWITCH,ROTARY	1
5	XAOZZ	08645	66728	..GRIP,STARTER ROPE	1
6	XAOZZ	08645	230228	..PIN,STRAIGHT,HEADLESS	1
7	XAOZZ	08645	294303	..SPRING,HELICAL,TORSION	1
8	XAOZZ	08645	222598	..ANCHOR,SPRING	1
9	XAOZZ	08645	295871	..PULLEY,FLAT INCLUDES ROPE, 63 INCH	1
10	XAOZZ	08645	66884	..ROPE,REWIND START, 63 IN FD FROM NSN	1
11	XAOZZ	08645	260414	..SPRING,RATCHET	1
12	XAOZZ	08645	230543	..ADAPTER,RATCHET	1
13	PAOZZ	08645	94062	.SCREW,ASSEMBLED WASHER	4
14	XBOZZ	08645	221796	.SCREEN,ROTATING	1
15	PAOZZ	08645	394558	.CLUTCH,STARTER,REWIND	1
16	PAOZZ	18876	10608076-5	.WASHER,FLAT	1
17	PAOZZ	08645	93381	.SCREW,ASSEMBLED WASHER	2
18	PAOZZ	08645	280457	PULLEY,ROPE STARTER	1
19	PAOZZ	08645	291508	SHIELDING ASSY, IGNITION CABLE	1
20	PAOZZ	08645	395492	ARMATURE GROUP(FOR USE WITH MAGNETRON IGNITION	1
20A	PAOZZ	08645	298968	.ARMATURE ASSEMBLY(FOR USE WITH POINTS AND CONDENSER)	1
21	PAOZZ	26377	AT8	.SPARK PLUG	1
22	XDOZZ	08645	392157	.FLYWHEEL,MAGNETO	1
23	PAOZZ	08645	222698	.KEY,FLYWHEEL	1
24	PAOZZ	08645	92987	.NUT,HEX	1
25	PAOZZ	08645	94128	.SCREW,REWIND STARTER	1
26	XAOZZ	08645	490817	.SPACER	1
27	PAOZZ	08645	390391	.TARTER ASSEMBLY,REWIND	1
28	XAOFF	08645	393576	.HOUSING,REWIND STARTER	1
29	XDOZZ	08645	222309	.COVER, BREAKER POINT	1
30	PAOZZ	08645	391284	.BREAKER ASSEMBLY,IGNITION (POINTS), (FOR USE WITH MAGNETRON) IGNITION, P/N 395492	1
31	PAOZZ	08645	29861	.CONDENSER (FOR USE WITH MAGNETRON IGNITION, P/N 395492)	1

END OF FIGURE

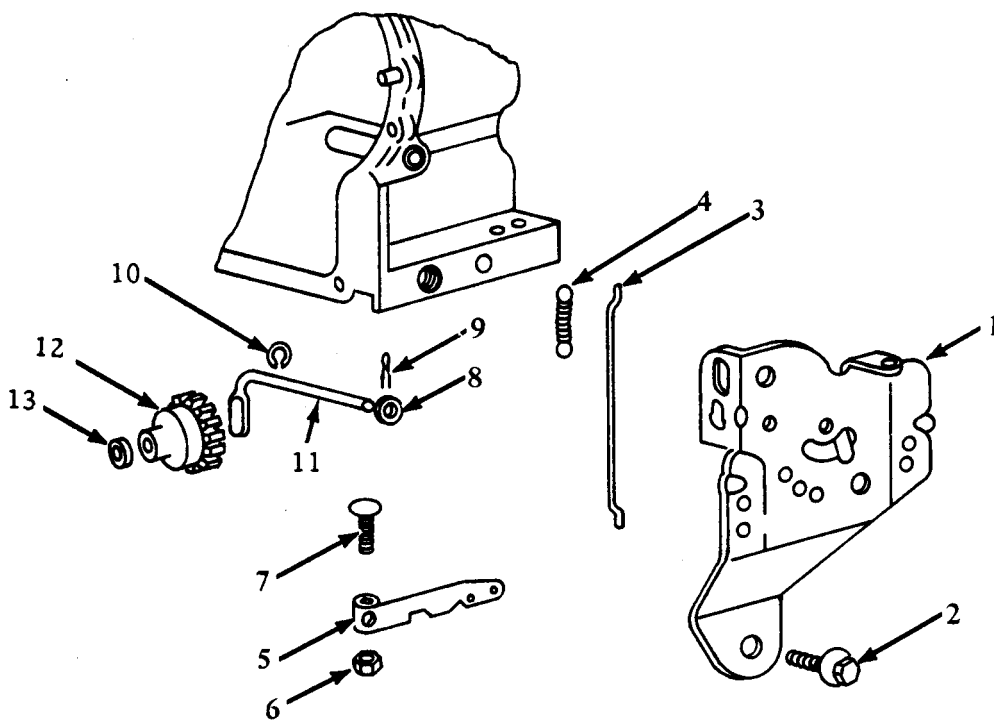


Figure 15. Governor

SECTION II		TM5-4310-376-24P			
(1)	(2)	(3)	(4)	(5)	(6)
ITEM	SMR		PART		
NO	CODE	FSCM	NUMBER	DESCRIPTION AND USABLE ON CODE (UOC)	QTY
GROUP 05 ENGINE ASSEMBLY					
FIGURE 15. GOVERNOR					
1	XBOZZ	08645	396695	.PLATE,GOV CONTROL	1
2	PAOZZ	08645	93535	.SCREW	1
3	XBOZZ	08645	261236	.LINK,GOVERNOR	1
4	PAOZZ	08645	260695	.SPRING,HELICAL,EXTENTION	1
5	XBOZZ	08645	396775	.LEVER ASSY,GOVERNOR	1
6	PAOZZ	08645	231082	..NUT,PLAIN,HEXAGON	1
7	PAOZZ	08645	92613	..BOLT	1
8	PAOZZ	08645	222450	.WASHER,FLAT	1
9	PAOZZ	08645	93306	.PIN,LOCK	1
10	PAFZZ	08645	93307	.RING,RETAINING	1
11	XBFZZ	08645	231057	.CRANK,GOVERNOR	1
12	PBFZZ	08645	391737	.GEAR,SPUR,WITH CAP	1
13	PBFZZ	08645	221551	.BEARING,WASHER,THRUST	1
END OF FIGURE					

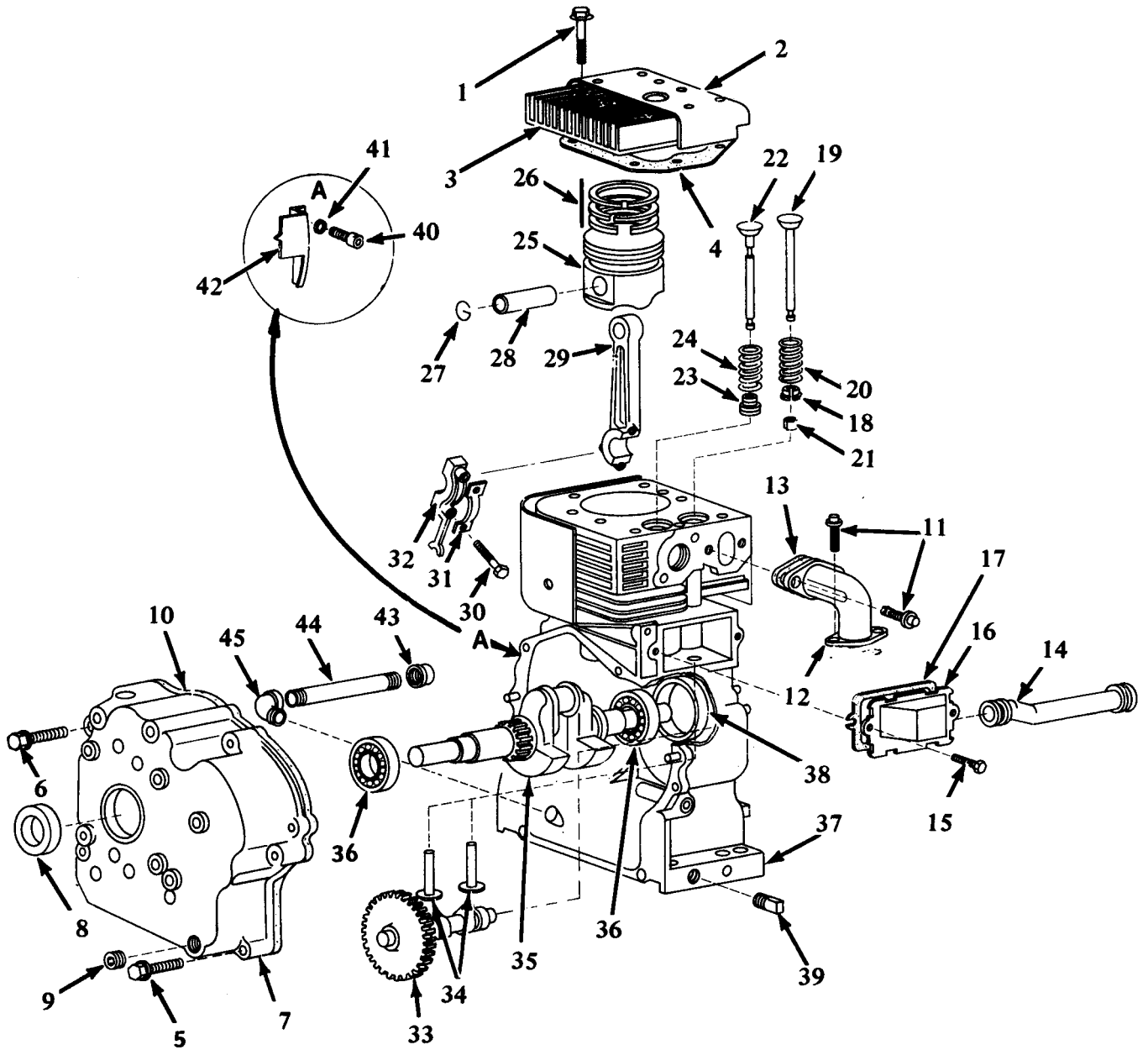


Figure 16. Cylinder Head, Crankcase and Cylinder

SECTION II (1) ITEM NO	(2) SMR CODE	(3) FSCM	TM5-4310-376-24P (4) PART NUMBER	(5) DESCRIPTION AND USABLE ON CODE (UOC)	(6) QTY
GROUP 05 ENGINE ASSEMBLY					
FIGURE 16. CYLINDER HEAD, CRANKCASE AND CYLINDER					
1	PAOZZ	08645	93723	.SCREW, STEEL 5/16-18 X 3 IN	9
2	XBOZZ	08645	222725	.COVER, CYLINDER HEAD	1
3	XDOZZ	08645	212366	.HEAD, CYLINDER	1
4	KFOZZ	08645	271075	.GASKET, CYL HEAD PART OF KIT P/N 391834	1
5	PAFZZ	08645	93585	.SCREW, 5/16-18 X 1 13/32 IN STEEL	5
6	PAFZZ	08645	93764	.SCREW 5/16 X 2 IN	1
7	XBFFF	08645	393893	.COVER ASSEMBLY, CRANKCASE	1
8	PAFZZ	08645	291675	..SEAL, PLAIN ENCASED	1
9	PAOZZ	08645	93418	PLUG, PIPE	1
10	KFFZZ	08645	270856	.GASKET, CRCK COVER PART OF KIT P/N 391834	1
11	PAFZZ	08645	93208	.SCREW 1/4-20 X 3/4 IN STEEL	2
12	XBFFZ	08645	212301	.ELBOW, INTAKE	1
13	KFFZZ	08645	270872	.GASKET, INTK ELB MTG PART OF KIT P/N 391834	1
14	XDFZZ	08645	280112	.HOSE, PREFORMED	1
15	PAFZZ	08645	93394	.SCREW, ASSEMBLED WASHER 3/16-24 X 5/16 IN, STEEL	2
16	PAFZZ	08645	391575	.BREATHER	1
17	KFFZZ	08645	27803	.GASKET PART OF KIT P/N 391834	1
18	PAFZZ	08645	221596	.RETAINER, HELICAL COMPRESSION	1
19	PAFZZ	08645	261462	.VALVE, FLOW CONTROL	1
20	PAFZZ	08645	65906	.SPRING, HELICAL, COMPRESSION	1
21	PAFZZ	08645	93630	.LOCK, VALVE SPRING RETAINER	2
22	PAFZZ	08645	261185	VALVE, POPPET, ENGINE	1
23	PAFZZ	08645	292260	.ROTOCAP, EXHAUST VALVE	1
24	PAFZZ	08645	26828	.SPRING, HELICAL, COMP	1
25	PBFFF	08645	394661	.PISTON ASSEMBLY	1
26	PAFZZ	08645	394665	..RING SET, PISTON	1
27	PAFZZ	08645	260924	..RING, RETAINING	2
28	PAFZZ	08645	299691	.PIN, PISTON	1
29	PBFZZ	08645	393860	.ROD ASSEMBLY, COMECTING	1
30	PAFZZ	24617	180086	..BOLT, MACHINE	2
31	PAFZZ	08645	222299	..LOCK, CONNECTING	1
32	PAFZZ	08645	222329	..DIPPER, CONNECTING ROD	1
33	PBFZZ	08645	212296	.GEAR, CAM	1
34	PAFZZ	08645	261183	.TAPPET, ENGINE POPPET	2
35	PBFZZ	08645	261497	.CRANKSHAFT, ENGINE	1
36	PAFZZ	08645	291667	.BEARING, BALL, ANNULAR	2
37	XBFFH	08645	394656	.CYLINDER ASSEMBLY CRANKCASE	1
38	PAFZZ	08645	391086	..SEAL, PLAIN ENCASED	1
39	PAOZZ	08645	91084	.PLUG	1
40	PAFZZ	96906	MS90728-30	.BOLT, MACHINE	2
41	PAFZZ	96906	MS35338-26	.WASHER, LOCK	2
42	PAOZZ	08645	221940	GUARD, MECHANICAL DRIVE	1
43	PAOZZ	81348	WW-P-521	CAP, PIPE	1
44	PAOZZ	96906	MS51953-40	NIPPLE, PIPE, GALVANIZED 1/4 IN NPT X 6 IN	1

SECTION II					
(1)	(2)	(3)	(4)	(5)	(6)
ITEM NO	SMR CODE	FSCM	PART NUMBER	DESCRIPTION AND USABLE ON CODE (UOC)	QTY
45	PAOZZ	96906	MS39230-2	ELBOW,PIPE 1/4 IN NPT,GALVANIZED	1
	PAFZZ	08645	391834	.GASKET SET	1
				GASKET (001) 16- 17	
				GASKET,CARB MTG (001) 12- 26	
				GASKET,CYL HD (001) 16- 4	
				GASKET,CRKC COVER (001) 016- 10	
				GASKET,INTK ELB MTG (001) 16- 13	
END OF FIGURE					

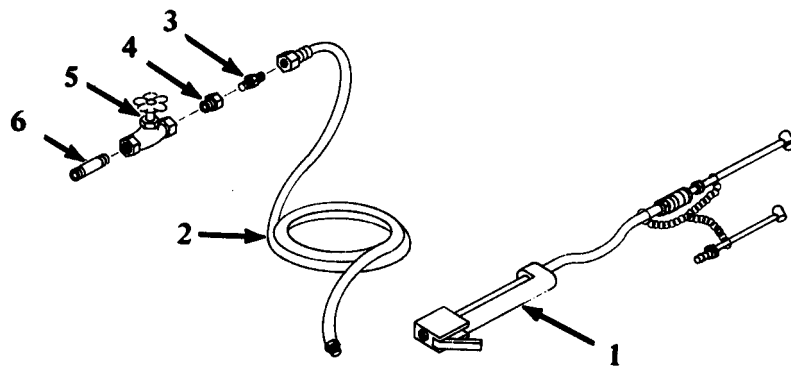


Figure 17. Air Discharge System

SECTION II				TM5-4310-376-24P		
(1)	(2)	(3)	(4)	(5)	(6)	
ITEM NO	SMR CODE	FSCM	PART NUMBER	DESCRIPTION AND USABLE ON CODE (UOC)	QTY	
GROUP 06 AIR DISCHARGE						
FIGURE 17. AIR DISCHARGE SYSTEM						
1	PAOZZ	94894	61J2-1506	INFLATOR-GAGE,PNEUMATIC	1	
2	PAOZO	19272	50-6741	HOSE ASSEMBLY,NONMETALLIC	1	
3	PAOZZ	19272	20-4400-4	ADAPTER,HOSE TO BUSHING	1	
4	PAOZZ	19272	WW-P-471 BDQBCDE	BUSHING,PIPE 1/4 IN NPT X 1/2 IN NPT	1	
5	PAOZZ	81348	11-6319	VALVE,GLOBE	1	
6	PAOZZ	96906	MS51953-73	NIPPLE,PIPE,GALVANIZED 1/2 IN NPT X 1 1/8 IN	1	
END OF FIGURE						

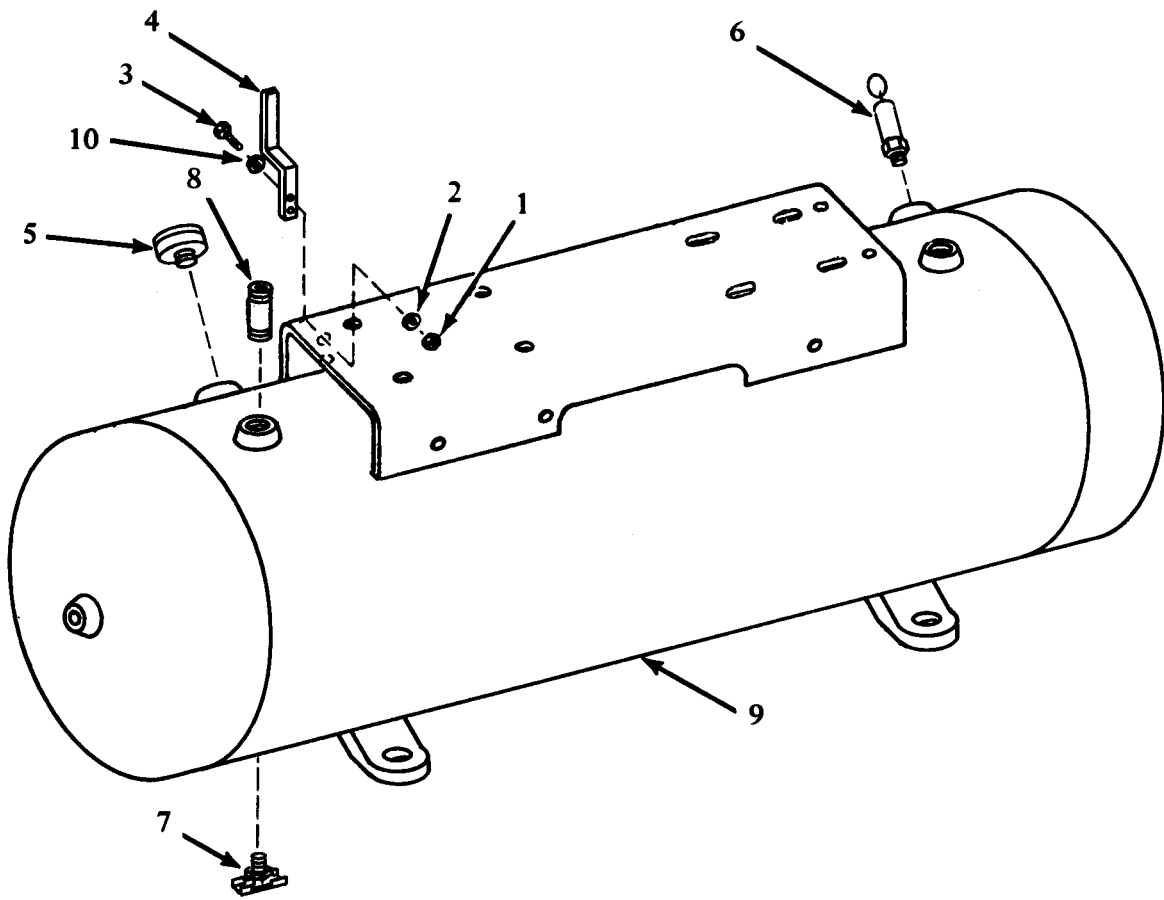


Figure 18. Air Receiver System

SECTION II		TM5-4310-376-24P			
(1)	(2)	(3)	(4)	(5)	(6)
ITEM NO	SMR CODE	FSCM	PART NUMBER	DESCRIPTION AND USABLE ON CODE (UOC)	QTY
GROUP 07 AIR RECEIVER SYSTEM					
FIGURE 18. AIR RECEIVER SYSTEM					
1	PAOZZ	96906	MS35649-2252	NUT,PLAIN,HEXAGON 1/4-20 STEEL	2
2	PAOZZ	96906	MS35338-44	WASHER,LOCK 1/4 IN,CADIUM PLATED	2
3	PAOZZ	96906	MS90725-6	SCREW,CAP,HEX HD 1/4-20 X 3/4 IN.GRADE 5,CADIUM PLATED	2
4	PAOZZ	19272	20-6187	BRACKET,DOUBLE,ANGLE	1
5	PAOZZ	61349	050755	GAGE,PRESSURE,DIAL	1
6	PAOZZ	58818	SV-25-200	VALVE,SAFETY RELIEF	1
7	PAOZZ	96906	M35782-5	COCK,DRAIN	1
8	PAOZZ	96906	MS51953-80	NIPPLE,PIPE,GALVANIZED 1/2 NPT X 3 IN	1
9	XBOZZ	19272	50-6842	RECEIVER ASSY,AIR	1
10	PAOZZ	96906	MS27183-17	WASHER,FLAT	1
END OF FIGURE					

TM 5-4310-376-24P

Section III. SPECIAL TOOLS LIST

(Not Applicable)

NATIONAL STOCK NUMBER AND PART NUMBER INDEX

FSCM	PART NUMBER	PART NUMBER INDEX	
		STOCK NUMBER	FIG ITEM
26377	AT8	2920002943891	14 21
71176	H-1	5365012144954	1 7
58818	LGM-20TM	4810011447989	3 10
96906	MS18154-60	5305009422196	2 14
96906	MS27183-11	5310008093078	11 4
96906	MS29513-212	5330002500226	10 2
96906	MS35206-230	5305008893000	3 8
96906	MS35338-44	5310005825965	6 5
96906	MS35338-44	5310005825965	6 18
96906	MS35338-45	5310004079566	1 2
96906	MS35338-46	5310006379541	2 15
96906	MS35338-48	5310005845272	7 2
96906	MS35649-2252	5310009971888	6 17
96906	MS35649-2312	5310008299981	1 1
96906	MS35649-2382	5310000563395	2 16
96906	MS39230-2	4730002534412	16 45
96906	MS51953-40	4730001961541	16 44
96906	MS51953-80	4730001961495	10 13
96906	MS51967-14	5310010702105	4 1
96906	MS51968-2	5310007680319	12 8
96906	MS90725-123	5305000712079	7 3
96906	MS90725-32	5306002258497	10 3
96906	MS90725-39	5306002258503	11 3
96906	MS90725-6	5305000680502	18 3
96906	MS90728-114	5305000712070	6 1
96906	M35782-5		18 7
88663	R40621	5330012144747	10 6
58818	SV-25-200	4820011560523	18 6
81348	WW-P-521	4730002033168	16 43
88663	W114364T37D	4310012144957	9 7
88663	W11866		9 10
33968	W20684	4730002312424	10 12
88663	W75327	4310012144749	10 10
51436	X1016T33		10 4
34494	1/4 948-60	4820006063678	8 2
19272	11-6306	3040012141183	3 9
19272	11-6320	2910012147434	2 9
19272	11-6325	2805012135885	2 10
24617	180086	5306000180086	16 30
19272	20-4400-4	4730012148357	17 3
19272	20-6334	4310011866899	1 4
19272	20-6355		2 13
08645	212301		16 12
08645	221432	2805012141236	11 5
08645	221596	5340002328811	16 18
08645	221940	3020012096716	16 42
08645	222272		12 7
08645	222329	2805010169498	16 32
08645	222598	5340012058860	14 8
08645	222725		16 2
08645	223016	5340012144982	13 4

NATIONAL STOCK NUMBER AND PART NUMBER INDEX

PART NUMBER INDEX

FSCM	PART NUMBER	STOCK NUMBER	FIG	ITEM
08645	230228	5315008554336	14	6
24161	A62	3030005780027	1	5
84830	LC-0420-3MW	5360010380215	12	29
96906	MS16995-80	5305009887844	10	7
96906	MS20066-258	5315008104761	1	9
96906	MS27183-17	5310008095997	4	4
96906	MS3367-5-9	5975001113208	12	12
96906	MS35338-41	5310000454007	3	7
96906	MS35338-44	5310005825965	6	9
96906	MS35338-44	5310005825965	18	2
96906	MS35338-45	5310004079566	11	2
96906	MS35338-48	5310005845272	4	2
96906	MS35425-39	5310000808495	12	3
96906	MS35649-2252	5310009971888	6	7
96906	MS35649-2252	5310009971888	18	1
96906	MS35649-2312	5310008299981	11	1
96906	MS35649-262	5310009349747	3	6
96906	MS51953-121B	4730001962059	5	6
96906	MS51953-73	4730009213612	17	6
96906	MS51953-80	4730001961495	18	8
96906	MS51967-15	5310007613706	7	1
96906	MS90725-109	5305000444153	9	3
96906	MS90725-113	5305000426417	4	3
96906	MS90725-32	5306002258497	1	3
96906	MS90725-32	5306002258497	10	16
96906	MS90725-6	5305000680502	1	8
96906	MS90725-64	5305002693214	6	13
96906	MS90728-30	5306002264823	16	40
88663	R33936	4310012144748	10	9
80063	SCB69389-4	5310005218475	12	32
81348	WW-P-471BDQBCDE	4730011924729	17	4
88663	W114364T17	4310012144958	9	13
88663	W11630		9	9
88663	W6925P2		10	19
51432	W99622T3		10	15
61349	050755	6685004252373	18	5
18876	10608076-5	5310000857089	14	16
19272	11-6319		17	5
19272	11-6321		12	18
19272	11-6326	6680012148388	2	11
71176	2BK62H	3020012116917	1	6
19272	20-6187	5340012144978	18	4
19272	20-6354		2	2
08645	212296	3020012144754	16	33
08645	212366		16	3
08645	221551	3120010456670	15	13
08645	221796		14	14
08645	222271		12	4
08645	222299	5340010260568	16	31
08645	222309		14	29
08645	222450	5310012144948	15	8
08645	222698	2990011954683	14	23

NATIONAL STOCK NUMBER AND PART NUMBER INDEX

PART NUMBER INDEX

FSCM	PART NUMBER	STOCK NUMBER	FIG	ITEM
08645	222744		12	15
51346	23A9C709	5315011739441	7	5
19272	230318	4310012141182	2	4
08645	230543	2990007360816	14	12
08645	231007	5307010173898	12	9
08645	231082	5310010173831	15	6
88663	242	4310012135866	4	5
08645	260695	5360010546591	15	4
08645	261183	2805010169897	16	34
08645	261236		15	3
08645	261497	2805012096705	16	35
08645	26828	5360005978978	16	24
06645	270267		12	25
08645	270856		16	10
08645	270917	5330010983732	13	7
08645	27803	5330008982075	16	17
08645	291667	3110005543304	16	36
08645	292260	2805003537724	16	23
08645	294303	5360007694104	14	7
08645	29861		14	31
08645	298968		14	20A
08645	299691	2805010170587	16	28
88663	30212922		7	4
88663	30221170		6	10
88663	30279038		6	3
88663	30280507		6	15
88663	30283121	4310012141178	5	2
88663	30283139		5	3
88663	30289870	5330012144746	9	6
88663	30292734	4310012116852	5	1
88663	30335392	4710012135883	8	1
88663	320011173	4320012148356	10	
88663	32012932		10	20
10001	363344PC2	5310002748470	9	4
88663	371227065	2805012096688	10	1
88663	37127289	4310012141179	6	11
88663	32127362		6	2
88663	37127768		10	5
88663	37128535		9	5
88663	37128634		9	11
08645	390303		2	3
08645	390391		14	27
08645	390930	2940010167619	12	7
08645	391086	5330010173848	16	38
08645	391284		14	30
08645	391737	3020010167497	15	12
08645	392033	2910010181929	12	26
08645	392295	2805012145000	12	10
08645	293576		14	28
08645	393761		13	2
08645	393893		16	7
08645	394358	2910012058656	12	1
08645	394656		16	37
08645	394665	2805012144959	16	26
08645	396775		15	5
08645	395492	2920012106593	14	20

NATIONAL STOCK NUMBER AND PART NUMBER INDEX

PART NUMBER INDEX

FSCM	PART NUMBER	STOCK NUMBER	FIG	ITEM
19272	50-6842		18	9
19272	50-6851		3	3
08645	65906	5360006647830	16	20
08645	66884		14	10
79470	69X12	4730002783808	3	1
19272	7-248	4720012144984	12	17
08645	231001	5310012144810	12	20
08645	231057		15	11
08645	23123	5305006379757	12	30
08645	260414	2990007360815	14	11
08645	260924	5365010496925	16	27
08645	261185	2805010169708	16	22
08645	261462	4820011343673	16	19
08645	26155	5360005984725	12	31
98061	269C2-2	473002634976	3	4
08645	270782	2940010167620	12	5
08645	270872		16	13
08645	271075		16	4
08645	280112		16	14
08645	280457	2990012439138	14	18
08645	291675	5330001549038	16	8
08645	292681	2910003585515	12	27
08645	295871	3020010546597	14	9
88663	30210298		10	8
88663	30221170		6	6
88663	31221170		6	19
88663	30280374	5330012135868	6	21
88663	30280515	5330012135867	6	12
88663	30283121	4310012141178	5	4
88663	30287783	4310012138829	9	16
88663	30289870		9	12
88663	30298020		9	15
88663	30345219		10	17
88663	32001869		5	5
88663	32024168	4310012144750	10	14
88663	37008042	4710012096682	9	1
88663	37127248	4310012141180	6	20
88663	37127354		6	14
88663	37127677		10	18
88663	37128527		9	8
88663	37128626	4310012096684	9	14
88663	37163334	4730012096659	10	11
08645	390765		12	21
08645	391063	2940010168033	12	2
08645	391575	2805010179439	16	16
08645	391834	5330010174027	16	
08645	392157		14	22
08645	392655	2805012144751	12	13
08645	393860	2805012144753	16	29
08645	394170	2805012144919	13	6
08645	394558	2990011816291	14	15
08645	394661	2805012144752	16	25

NATIONAL STOCK NUMBER AND PART NUMBER INDEX

PART NUMBER INDEX

FSCM	PART NUMBER	STOCK NUMBER	FIG	ITEM
08645	396695		15	1
08645	398595		14	2
08645	490817		14	26
19272	50-6741	4720011091426	17	2
19272	50-6844	4710012135882	3	2
94894	61J2-1506	4910002042644	17	1
08645	66728		14	5
08645	68838	5330010173849	12	14
19272	7-21-11-21-48		3	5
19272	7-249	472001N798934	12	19
88663	71A10B7	4730011595507	9	2
51436	87A2C144G	5305011847625	6	8
88663	87A2C500P	5305012144901	6	4
08645	91920	5305006229476	12	28
08645	92666	5305007194782	12	23
08645	92987		14	24
08645	93053	4730012135869	12	16
08645	93306	5315010482291	15	9
08645	93381	5305009920440	14	17
08645	93394	5305000738255	16	15
08645	93418	4730010174816	16	9
08645	93559	5305012106571	13	5
08645	93630	2805003512444	16	21
08645	93723	5305010175552	16	1
08645	93927	5305012106592	13	3
88663	95056073	4730012144745	8	5
08645	99525	6680011953664	12	33
19272	83-1049	4310021241184	8	3
51436	87A2C144G	5305011847625	6	16
08645	91084	5365004122600	16	39
08645	92613	5306012048537	15	7
08645	93158	5305007194782	14	1
08645	93053	4730012135869	2	1
08645	93208	5305010173838	16	11
08645	93307	5365010260648	15	10
08645	93394	5305000738255	12	11
08645	93415	5305010175553	12	24
08645	93535	5305010173834	15	2
08645	93585	5305010173841	16	5
08645	93705	5305005435220	13	1
08645	93764	5305010173839	16	6
08645	94062	5305012106570	14	13
08645	94128		14	25
88663	95083275	4730012144756	8	4

By Order of the Secretary of the Army:

JOHN A. WICKHAM, JR.
General, United States Army
Chief of Staff

Official:

R. L. DILWORTH
Brigadier General, United States Army
The Adjutant General

DISTRIBUTION:

To be distributed in accordance with DA Form 12-25A, Organizational, and Direct Support and General Support Maintenance Requirements for Compressor, Reciprocating, Air, Gas Engine Driven, 15CFM, 175 PSI (50-6840).

RECOMMENDED CHANGES TO EQUIPMENT TECHNICAL PUBLICATIONS



THEN... JOT DOWN THE DOPE ABOUT IT ON THIS FORM, CAREFULLY TEAR IT OUT, FOLD IT AND DROP IT IN THE MAIL!

SOMETHING WRONG WITH THIS PUBLICATION?

FROM: (PRINT YOUR UNIT'S COMPLETE ADDRESS)

PFC JOHN DOE
COA, 3d ENGINEER BN
FT. LEONARDWOOD, MD 63108

DATE SENT

PUBLICATION NUMBER
TM 5-4310-376-24P

PUBLICATION DATE
14 Apr 86

PUBLICATION TITLE
Air Compressor, Gas Eng Drvn,
NSN 4310-01-167-5544

BE EXACT... PIN-POINT WHERE IT IS

PAGE NO	PARA-GRAPH	FIGURE NO	TABLE NO
6	2-1 a		
81		4-3	
125	line 20		

IN THIS SPACE TELL WHAT IS WRONG AND WHAT SHOULD BE DONE ABOUT IT:

In line 6 of paragraph 2-1a the manual states the engine has 6 Cylinders. The engine on my set only has 4 Cylinders. Change the manual to show 4 Cylinders.

Callout 16 on figure 4-3 is pointing at a bolt. In key to figure 4-3, item 16 is called a shim - Please correct one or the other.

I ordered a gasket, item 19 on figure B-16 by NSN 2 910-00-762-3001. I got a gasket but it doesn't fit. Supply says I got what I ordered, so the NSN is wrong. Please give me a good NSN

PRINTED NAME, GRADE OR TITLE, AND TELEPHONE NUMBER

JOHN DOE, PFC (268) 317-7111

SIGN HERE:

JOHN DOE

DA FORM 2028-2
1 JUL 79

PREVIOUS EDITIONS ARE OBSOLETE.
DRSTS-M Overprint 1, 1 Nov 80

P.S.--IF YOUR OUTFIT WANTS TO KNOW ABOUT YOUR RECOMMENDATION MAKE A CARBON COPY OF THIS AND GIVE IT TO YOUR HEADQUARTERS.

TEAR ALONG PERFORATED LINE

FILL IN YOUR
UNIT'S ADDRESS

FOLD BACK

DEPARTMENT OF THE ARMY

OFFICIAL BUSINESS
PENALTY FOR PRIVATE USE \$300

POSTAGE AND FEES PAID
DEPARTMENT OF THE ARMY
DOD 314



COMMANDER
U S ARMY TROOP SUPPORT COMMAND
ATTN: AMSTR-MCTS
4300 GOODFELLOW BOULEVARD
ST. LOUIS, MO 63120-1798

TEAR ALONG PERFORATED LINE

RECOMMENDED CHANGES TO EQUIPMENT TECHNICAL PUBLICATIONS



THEN... JOT DOWN THE DOPE ABOUT IT ON THIS FORM. CAREFULLY TEAR IT OUT. FOLD IT AND DROP IT IN THE MAIL!

SOMETHING WRONG WITH THIS PUBLICATION?

FROM: (PRINT YOUR UNIT'S COMPLETE ADDRESS)

DATE SENT

PUBLICATION NUMBER

TM 5-4310-376-24P

PUBLICATION DATE

14 Apr 86

PUBLICATION TITLE

Air Compressor, Gas Eng Drvn,
NSN 4310-01-167-5544

BE EXACT... PIN-POINT WHERE IT IS

PAGE NO.	PARA-GRAPH	FIGURE NO.	TABLE NO.

IN THIS SPACE TELL WHAT IS WRONG AND WHAT SHOULD BE DONE ABOUT IT:

TEAR ALONG PERFORATED LINE

PRINTED NAME, GRADE OR TITLE, AND TELEPHONE NUMBER

SIGN HERE:

DA FORM 1 JUL 79 2028-2

PREVIOUS EDITIONS ARE OBSOLETE.
DRSTS-M Overprint 2, 1 Nov 80.

P.S.--IF YOUR OUTFIT WANTS TO KNOW ABOUT YOUR RECOMMENDATION MAKE A CARBON COPY OF THIS AND GIVE IT TO YOUR HEADQUARTERS.

FILL IN YOUR
UNIT'S ADDRESS

FOLD BACK

DEPARTMENT OF THE ARMY

OFFICIAL BUSINESS
PENALTY FOR PRIVATE USE \$300

POSTAGE AND FEES PAID
DEPARTMENT OF THE ARMY
DOD 314



TEAM ALONG PERFORATED LINE

COMMANDER
U S ARMY TROOP SUPPORT COMMAND
ATTN: AMSTR-MCTS
4300 GOODFELLOW BOULEVARD
ST. LOUIS, MO 63120-1798

RECOMMENDED CHANGES TO EQUIPMENT TECHNICAL PUBLICATIONS



THEN... JOT DOWN THE DOPE ABOUT IT ON THIS FORM. CAREFULLY TEAR IT OUT, FOLD IT AND DROP IT IN THE MAIL!

SOMETHING WRONG WITH THIS PUBLICATION?

FROM: (PRINT YOUR UNIT'S COMPLETE ADDRESS)

DATE SENT

PUBLICATION NUMBER

TM 5-4310-376-24P

PUBLICATION DATE

14 Apr 86

PUBLICATION TITLE

Air Compressor, Gas Eng Drvn,
NSN 4310-01-167-5544

BE EXACT... PIN-POINT WHERE IT IS

PAGE NO.	PARA-GRAPH	FIGURE NO.	TABLE NO.

IN THIS SPACE TELL WHAT IS WRONG AND WHAT SHOULD BE DONE ABOUT IT:

PRINTED NAME, GRADE OR TITLE, AND TELEPHONE NUMBER

SIGN HERE:

TEAR ALONG PERFORATED LINE

FILL IN YOUR
UNIT'S ADDRESS

FOLD BACK

DEPARTMENT OF THE ARMY

OFFICIAL BUSINESS
PENALTY FOR PRIVATE USE \$300

POSTAGE AND FEES PAID
DEPARTMENT OF THE ARMY
DOD 314



TEAR ALONG PERFORATED LINE

COMMANDER
U S ARMY TROOP SUPPORT COMMAND
ATTN: AMSTR-MCTS
4300 GOODFELLOW BOULEVARD
ST. LOUIS, MO 63120-1798

RECOMMENDED CHANGES TO EQUIPMENT TECHNICAL PUBLICATIONS



THEN... JOT DOWN THE DOPE ABOUT IT ON THIS FORM, CAREFULLY TEAR IT OUT, FOLD IT AND DROP IT IN THE MAIL!

SOMETHING WRONG WITH THIS PUBLICATION?

FROM: (PRINT YOUR UNIT'S COMPLETE ADDRESS)

DATE SENT

PUBLICATION NUMBER

TM 5-4310-376-24P

PUBLICATION DATE

14 Apr 86

PUBLICATION TITLE

Air Compressor, Gas Eng Drvn,
NSN 4310-01-167-5544

BE EXACT... PIN-POINT WHERE IT IS

PAGE NO.

PARA-GRAPH

FIGURE NO.

TABLE NO.

IN THIS SPACE TELL WHAT IS WRONG AND WHAT SHOULD BE DONE ABOUT IT:

TEAR ALONG PERFORATED LINE

PRINTED NAME, GRADE OR TITLE, AND TELEPHONE NUMBER

SIGN HERE:

DA FORM 2028-2
1 JUL 79

PREVIOUS EDITIONS ARE OBSOLETE.
DRSTS-M Overprint 2, 1 Nov 80.

P.S.--IF YOUR OUTFIT WANTS TO KNOW ABOUT YOUR RECOMMENDATION MAKE A CARBON COPY OF THIS AND GIVE IT TO YOUR HEADQUARTERS.

FILL IN YOUR
UNIT'S ADDRESS

FOLD BACK

DEPARTMENT OF THE ARMY

OFFICIAL BUSINESS
PENALTY FOR PRIVATE USE \$300

POSTAGE AND FEES PAID
DEPARTMENT OF THE ARMY
DOD 314



COMMANDER
U S ARMY TROOP SUPPORT COMMAND
ATTN: AMSTR-MCTS
4300 GOODFELLOW BOULEVARD
ST. LOUIS, MO 63120-1798

TEAR ALONG PERFORATED LINE

The Metric System and Equivalents

Linear Measure

1 centimeter = 10 millimeters = .39 inch
 1 decimeter = 10 centimeters = 3.94 inches
 1 meter = 10 decimeters = 39.37 inches
 1 dekameter = 10 meters = 32.8 feet
 1 hectometer = 10 dekameters = 328.08 feet
 1 kilometer = 10 hectometers = 3,280.8 feet

Weights

1 centigram = 10 milligrams = .15 grain
 1 decigram = 10 centigrams = 1.54 grains
 1 gram = 10 decigram = .035 ounce
 1 dekagram = 10 grams = .35 ounce
 1 hectogram = 10 dekagrams = 3.52 ounces
 1 kilogram = 10 hectograms = 2.2 pounds
 1 quintal = 100 kilograms = 220.46 pounds
 1 metric ton = 10 quintals = 1.1 short tons

Liquid Measure

1 centiliter = 10 milliliters = .34 fl. ounce
 1 deciliter = 10 centiliters = 3.38 fl. ounces
 1 liter = 10 deciliters = 33.81 fl. ounces
 1 dekaliter = 10 liters = 2.64 gallons
 1 hectoliter = 10 dekaliters = 26.42 gallons
 1 kiloliter = 10 hectoliters = 264.18 gallons

Square Measure

1 sq. centimeter = 100 sq. millimeters = .155 sq. inch
 1 sq. decimeter = 100 sq. centimeters = 15.5 sq. inches
 1 sq. meter (centare) = 100 sq. decimeters = 10.76 sq. feet
 1 sq. dekameter (are) = 100 sq. meters = 1,076.4 sq. feet
 1 sq. hectometer (hectare) = 100 sq. dekameters = 2.47 acres
 1 sq. kilometer = 100 sq. hectometers = .386 sq. mile

Cubic Measure

1 cu. centimeter = 1000 cu. millimeters = .06 cu. inch
 1 cu. decimeter = 1000 cu. centimeters = 61.02 cu. inches
 1 cu. meter = 1000 cu. decimeters = 35.31 cu. feet

Approximate Conversion Factors

To change	To	Multiply by	To change	To	Multiply by
inches	centimeters	2.540	ounce-inches	newton-meters	.007062
feet	meters	.305	centimeters	inches	.394
yards	meters	.914	meters	feet	3.280
miles	kilometers	1.609	meters	yards	1.094
square inches	square centimeters	6.451	kilometers	miles	.621
square feet	square meters	.093	square centimeters	square inches	.155
square yards	square meters	.836	square meters	square feet	10.764
square miles	square kilometers	2.590	square meters	square yards	1.196
acres	square hectometers	.405	square kilometers	square miles	.386
cubic feet	cubic meters	.028	square hectometers	acres	2.471
cubic yards	cubic meters	.765	cubic meters	cubic feet	35.315
fluid ounces	milliliters	29.573	cubic meters	cubic yards	1.308
pints	liters	.473	milliliters	fluid ounces	.034
quarts	liters	.946	liters	pints	2.113
gallons	liters	3.785	liters	quarts	1.057
ounces	grams	28.349	liters	gallons	.264
pounds	kilograms	.454	grams	ounces	.035
short tons	metric tons	.907	kilograms	pounds	2.205
pound-feet	newton-meters	1.356	metric tons	short tons	1.102
pound-inches	newton-meters	.11296			

Temperature (Exact)

°F	Fahrenheit temperature	5/9 (after subtracting 32)	Celsius temperature	°C
----	------------------------	----------------------------	---------------------	----

